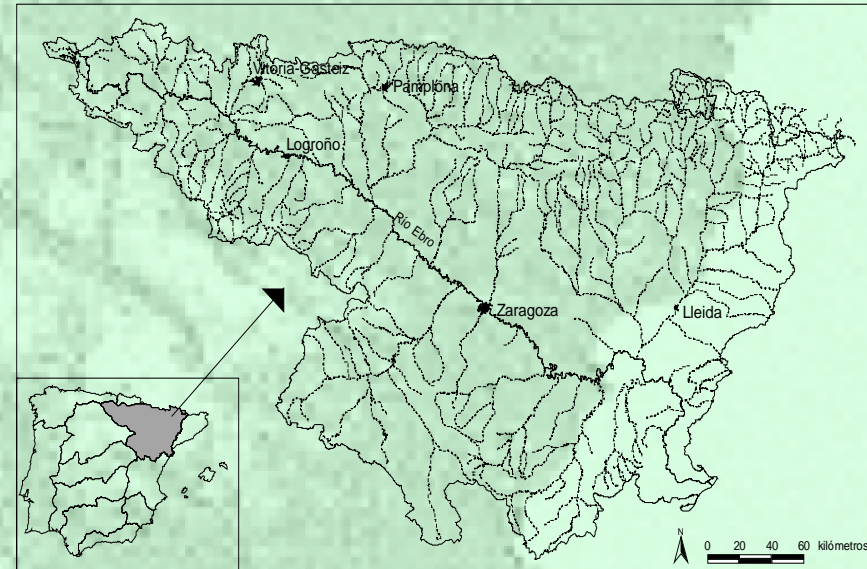
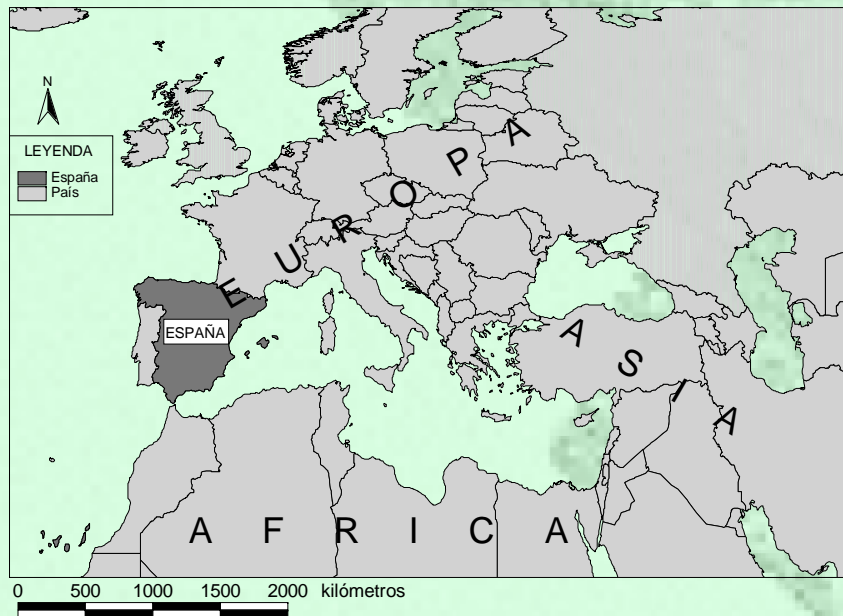
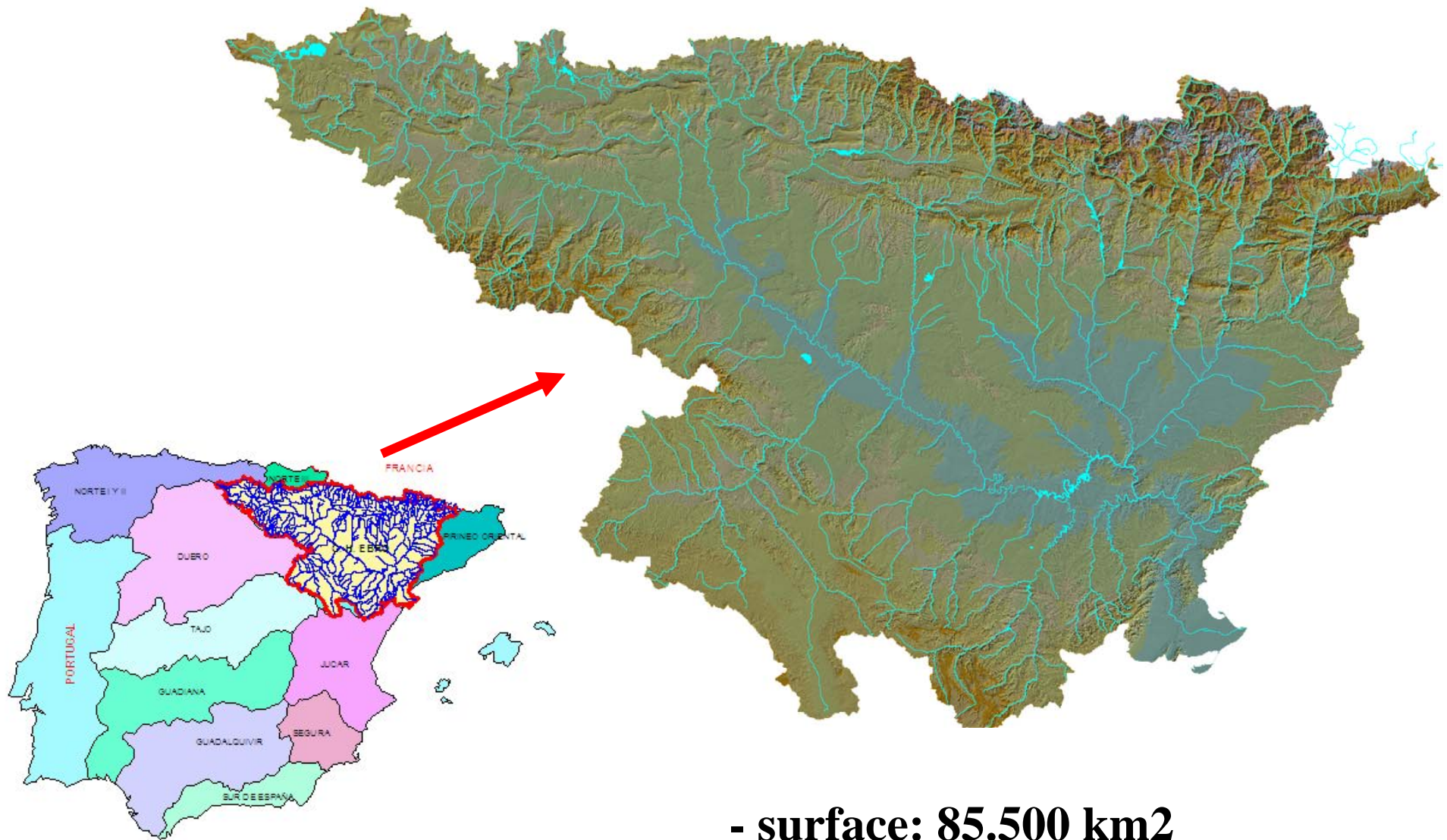


EURO RIOC 2007

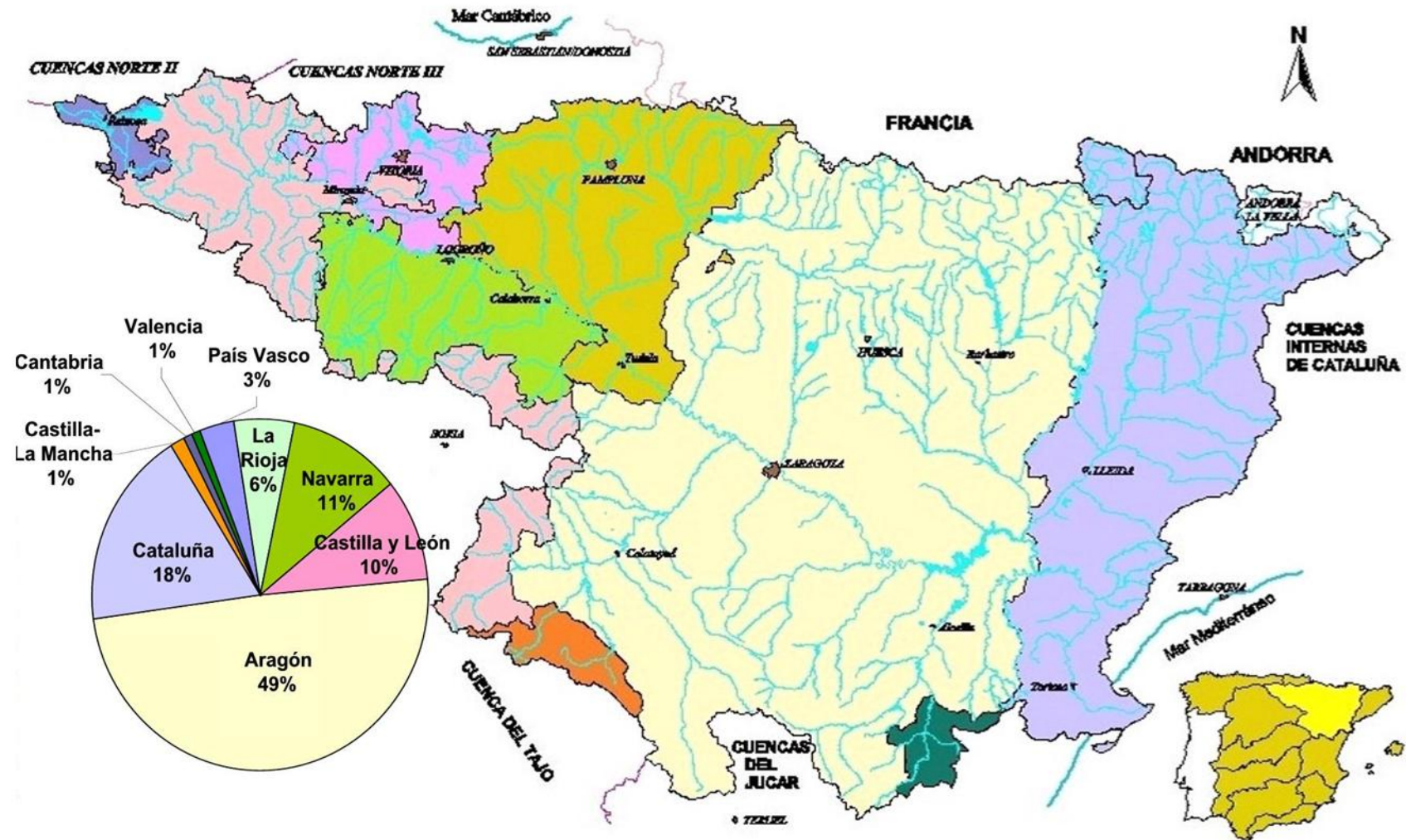
CONSULTATION AND PUBLIC PARTICIPATION IN THE EBRO RIVER BASIN (SPAIN)





- surface: 85.500 km²
- average rainfall: 650 mm
- annual run-off: 17.000 Mm³

Demarcación del Ebro



PUBLIC CONSULTATION UNDER THE WATER FRAMEWORK DIRECTIVE

2006: Timetable and work programme.

→ 6-month public consultation

**2007: Interim overview of the significant water
management issues**

→ 6-month public consultation

2008: Draft of the river basin management plan

→ 6-month public consultation



GOBIERNO
DE ESPAÑA

MINISTERIO
DE MEDIO AMBIENTE

CONFEDERACIÓN
HIDROGRÁFICA
DEL EBRO

PUBLIC CONSULTATION

Ebro Water District: On 26th July started the public consultation on the following documents:

- Timetable and work programme**
- Project for public participation**
- General study of the basin district based on the Article 5 Report**



GOBIERNO
DE ESPAÑA

MINISTERIO
DE MEDIO AMBIENTE

CONFEDERACIÓN
HIDROGRÁFICA
DEL EBRO

PROJECT FOR PUBLIC PARTICIPATION IN THE EBRO BASIN DISTRICT

There was a previous research and consultation about how should be participation in our district:

2005: research project with sociologists to define the best approach for public participation in accordance with our reality

2006: pilot project

2006-07: 41 interviews with key stakeholders



GOBIERNO
DE ESPAÑA

MINISTERIO
DE MEDIO AMBIENTE

CONFEDERACIÓN
HIDROGRÁFICA
DEL EBRO

PROJECT FOR PUBLIC PARTICIPATION IN THE EBRO BASIN DISTRICT

Three main items:

**1- The already existing participatory bodies
and the new ones**

2- The district approach

3- The sub-basin approach



GOBIERNO
DE ESPAÑA

MINISTERIO
DE MEDIO AMBIENTE

CONFEDERACIÓN
HIDROGRÁFICA
DEL EBRO

1.- PARTICIPATORY BODIES:

**The WATER DISTRICT COUNCIL and the
WATER AUTHORITIES COMMISSION**

Including representatives from:

National Administration

**Regional Administration (Autonomous
Communities)**

Water users

Municipalities

Environmentalists and civil society

Coastal Authorities

**The timetable and the project for public
participation was presented to them on 18th July**



GOBIERNO
DE ESPAÑA

MINISTERIO
DE MEDIO AMBIENTE

CONFEDERACIÓN
HIDROGRÁFICA
DEL EBRO

2.- THE DISTRICT APPROACH

District meetings with groups of stakeholders

- Water Users (Industry, Energy, Irrigation, Recreation)
- Environmentalists and civil society
- Universities and researching centres

Emission of reports by stakeholders with the support of the Ebro RBO

Participation and consultation on the “overview of the significant water management issues” and on the “management plan” as a whole



Meeting with water reserchears within the Ebro basin – 19th February 2007



3.- THE SUB-BASIN APPROACH

A “bottom-up” process – identification of measures not just on paper but on the ground with the affected people.

Diagnosis and meetings with stakeholders within the 30 major catchments throughout the Ebro District.

In cooperation with the autonomous communities – regions.

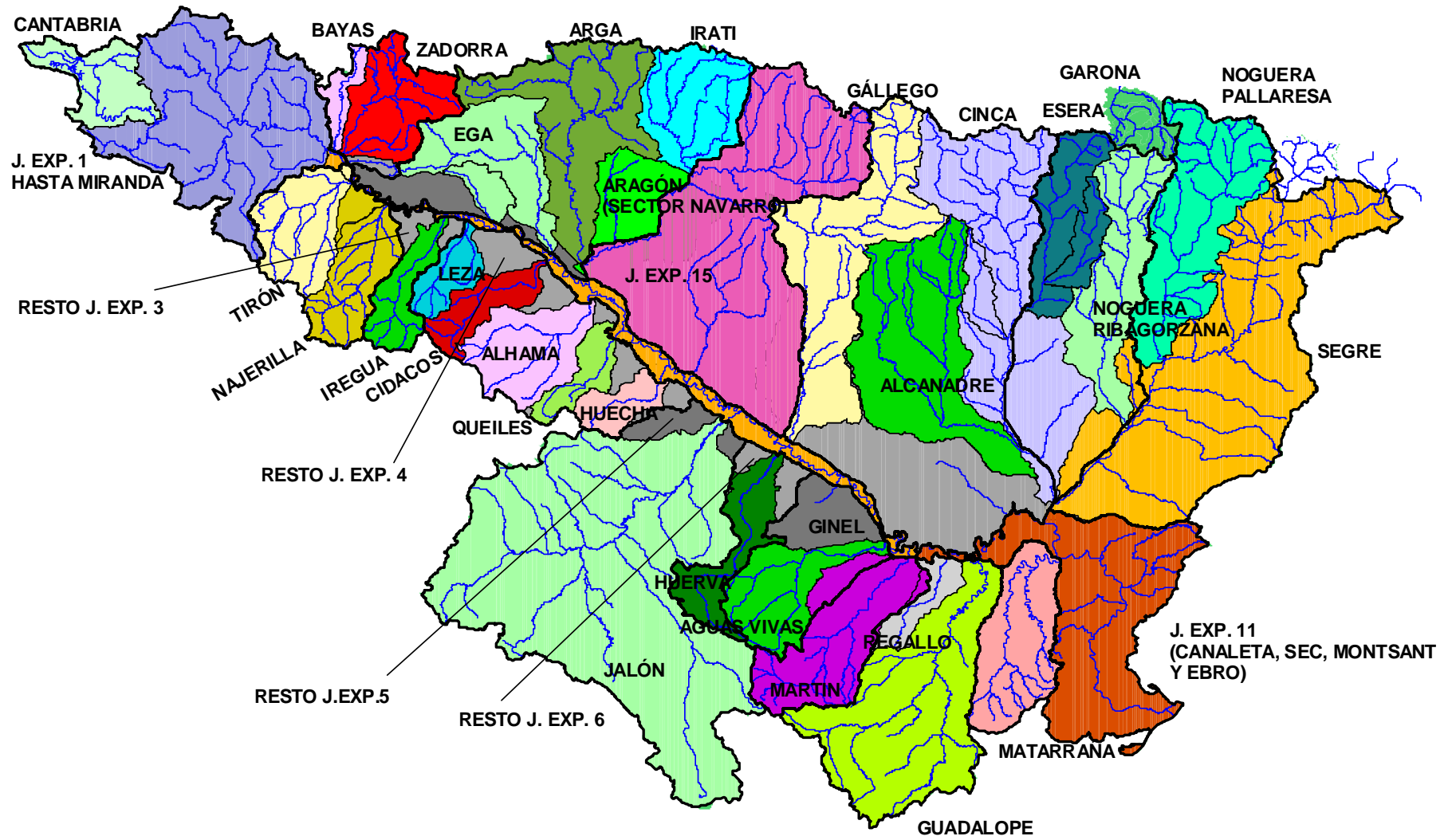
Participation and consultation on the “programme of measures”



GOBIERNO
DE ESPAÑA

MINISTERIO
DE MEDIO AMBIENTE

CONFEDERACIÓN
HIDROGRÁFICA
DEL EBRO





Meetings with stakeholders in Jalón catchment – April-May 2007



Directiva marco del agua en la Cuenca del Ebro

Participa

<http://www.chebro.es>

DEMARCACIÓN HIDROGRÁFICA DEL EBRO



DOCUMENTOS A CONSULTA PÚBLICA

PARTICIPACIÓN CIUDADANA

DOCUMENTOS UE

NORMATIVA

PLAN MEDIOAMBIENTAL DEL EBRO Y TRAMO BAJO DEL CINCA

"LA DIRECTIVA MARCO DEL AGUA Y SU APLICACIÓN A LA CUENCA DEL EBRO"

(Video de 59 Mb)

Thank you for your attention

**<http://www.chebro.es>
dma@chebro.es**



GOBIERNO
DE ESPAÑA

MINISTERIO
DE MEDIO AMBIENTE

CONFEDERACIÓN
HIDROGRÁFICA
DEL EBRO