



LINKING RURAL DEVELOPMENT AND WATER MANAGEMENT: THE MEDITERRANEAN COMPONENT

Giovanni Bidoglio

Joint Research Centre

Institute for Environment and Sustainability





Environmental strategies for sustainability require ensuring appropriate integration of land, soil and water legislative initiatives



Water Framework Directive (WFD)
Promoting Sustainable Water Use



Common Agricultural Policy (CAP) Reform
Single Framework for Sustainable
Agriculture and Rural Development



The Commission Strategy on the Implementation of the WFD Directive - The CIS Project



River Basin Management Plans as a tool to establish a coherent managerial frame for all waters and allow consistency in planning and measures

- Analysis pressures and impacts
- Heavily modified waters
- Reference Conditions rivers and lakes
- Coastal and transitional waters
- Inter-calibration

The Guidance Documents

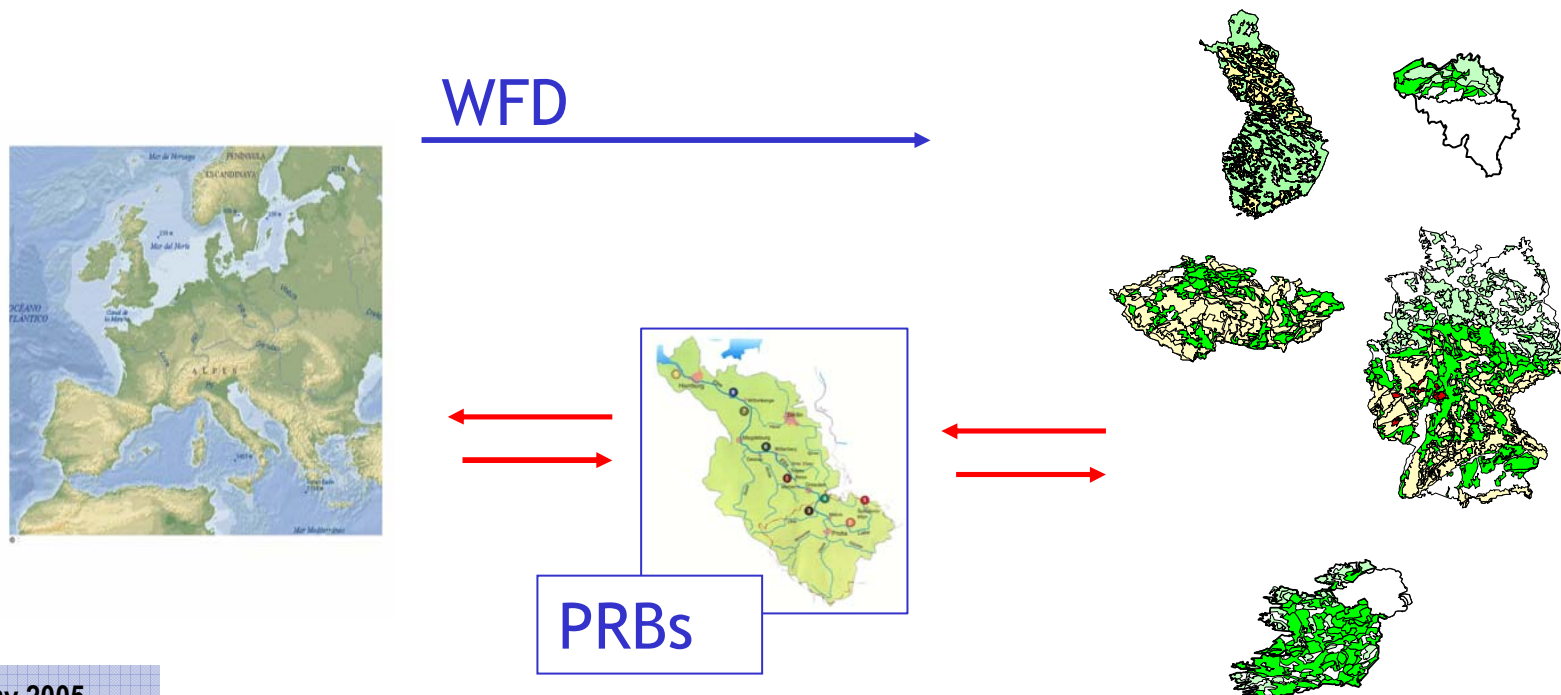
- Economic analysis
- Monitoring
- Assessment and classification of ground waters
- Best practices in River Basin planning
- GIS



Ensure coherence and cross applicability by testing Guidance Documents in selected Pilot River Basins (PRB)



- ✓ PRBs as country interfaces for implementation
- ✓ Front runners in the implementation of obligations
- ✓ PRBs as a trigger for issues that will be further highlighted in preparing River Basin Management Plans





Main results are summarised in the

**PILOT RIVER BASIN OUTCOME REPORT: Testing of the
Guidance Documents**



and in the individual Art. 5 PRB Reports for: **Odense, Tevere,
Jucar, Somos, Shannon, Suldal, Ribble**

Joint Research Centre

COMMON IMPLEMENTATION STRATEGY FOR THE WATER FRAMEWORK DIRECTIVE (2000/60/EC)

Júcar Pilot River Basin
Provisional Article 5 Report

ENVIRONMENT AGENCY

Fyns Amt
Odense Pilot River

A high proportion of water bodies at risk of failing to meet the WFD “good status” objectives due to agriculture

Testis

2004

Ribble Pilot River Basin
Public Participation and River E Planning – Early Experience
May 2004

pursuant to the Water Framework Directive

3 2004

REPORT

2003-2004

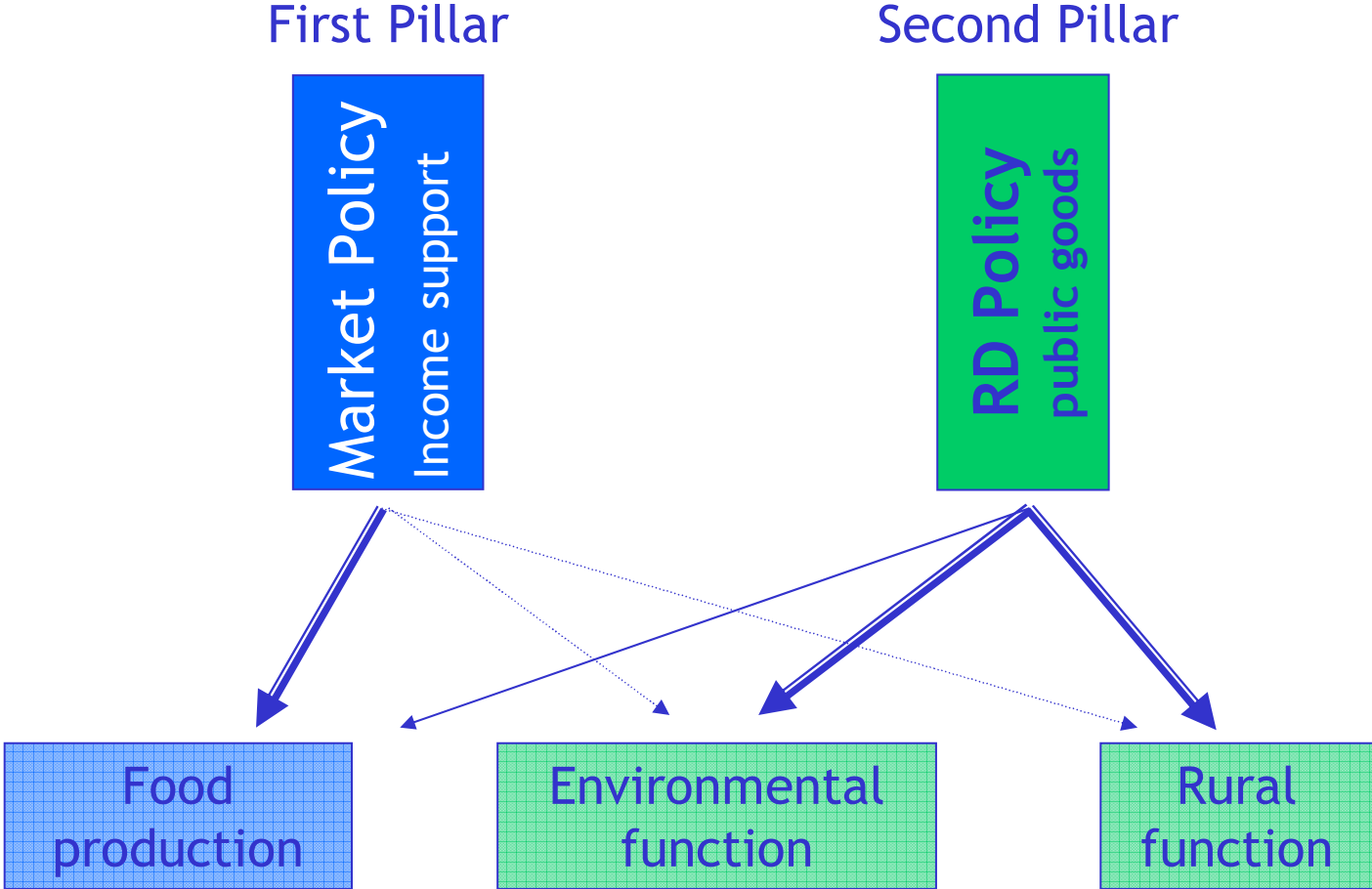


2003 CAP reform



Recent reforms of the EU Common Agricultural Policy (CAP) and Rural Development Programmes offer increased opportunities to support farmers in achieving environmental objectives

Joint Research Centre





PILLAR 1: Environmental Cross Compliance obligations

Statutory Management Requirements: 6 Directives in the field of environment

Keep land in *Good Agricultural and Environmental Conditions* (GAEC)

PILLAR 2: Agri-Environmental Measures

Require farmers to go beyond cross compliance

Selected by countries-regions taking into account the diversity of soil-climate-farming system



Programmed expenditures Rural Development - Pillar 2



Group 1: restructuring/competitiveness

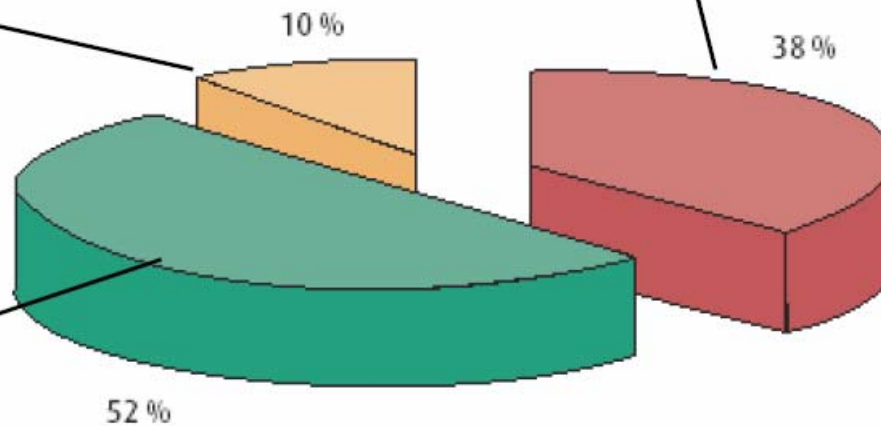
- Investments in farms
- Young farmers
- Vocational training
- Early retirement
- Investments in processing/marketing
- Land improvement
- Reparcelling
- Setting up of farm relief and farm management services
- Marketing of quality agricultural products
- Agricultural water resources management
- Development and improvement of infrastructure related to agriculture
- Restoring agricultural production potential

Group 2: rural economy/rural communities

- Priorities:**
- **Water**
 - **Biodiversity**
 - **Climate Change**

Group 2: environment/land management

- Less favoured areas and areas with environmental restrictions
- Agri-environment
- Afforestation of agricultural land
- Other forestry
- Environmental protection in connection with agriculture, forestry



- Group 1: restructuring/competitiveness
- Group 2: environment/land management
- Group 3: rural economy/rural communities

Programmed expenditures 2000-2006



Some examples of subsidized measures

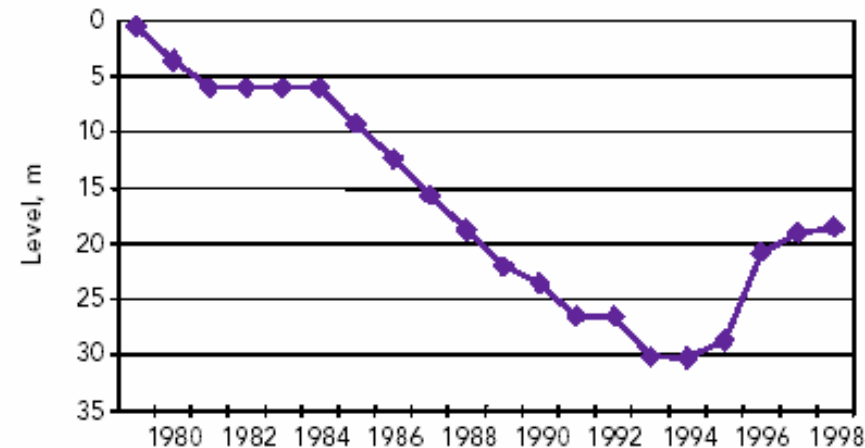
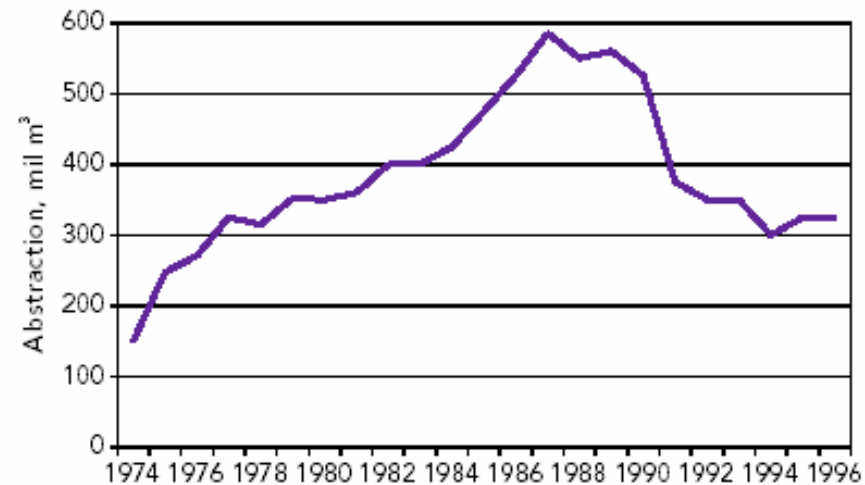


- Reduction of inputs of **fertilisers** and **agrochemicals**, adoption of the “integrated farming” approach
- Minimum soil cover, retention of terraces to counteract **water erosion**
- **Crop rotation** measures and conversion of arable crop to grassland, set-aside areas
- **Extensification** of farming systems, including livestock
- Maintenance of biotopes and **wetlands**, maintenance of traditional cultural landscapes, establishment of **buffer areas**
- Switching from irrigated to **non-irrigated** crops
-



Annual abstractions from the aquifer (top) and ground water-level recovery (bottom) - La Mancha Occidental, Upper Guadiana basin (source: Spanish Ministry of Environment, 2000)

Restrictions on water use were imposed during the 1990s and implemented with the help of an agri-environmental programme included in the regional Rural Development Plan

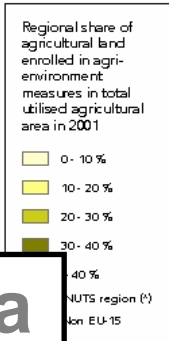
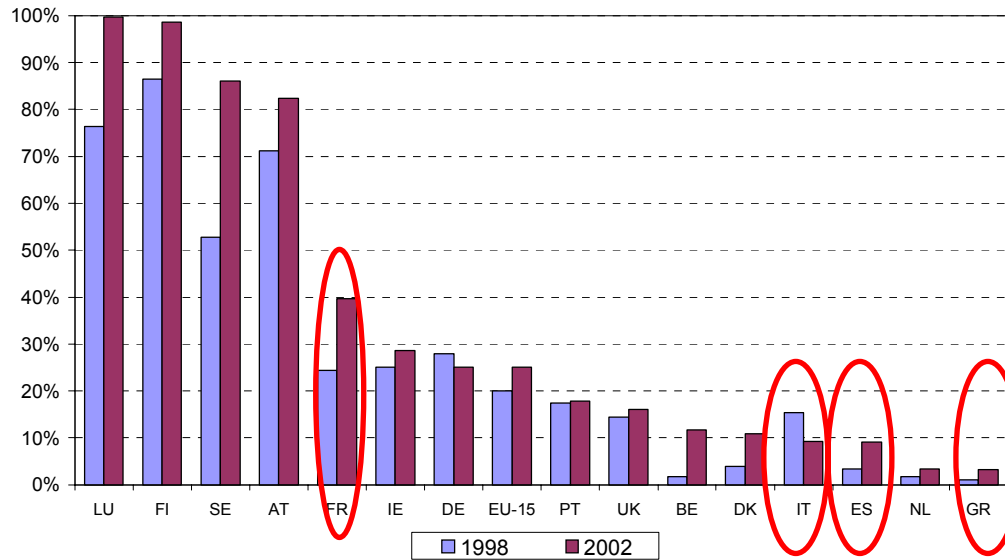




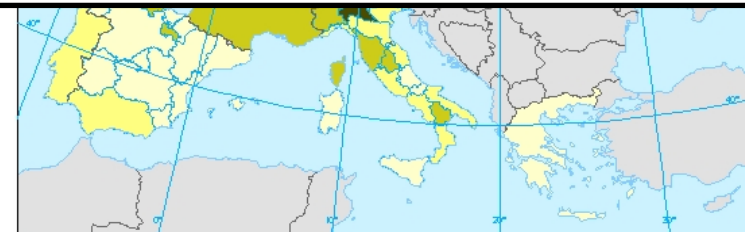
Share of total Used Agricultural Area enrolled in agri-environmental measures (1998-2002)



Joint Research Centre



Rural Development Plans can potentially be a powerful tool to achieve WFD objectives in the Mediterranean area





Combined solutions are needed to respond to environmental requirements of various policies

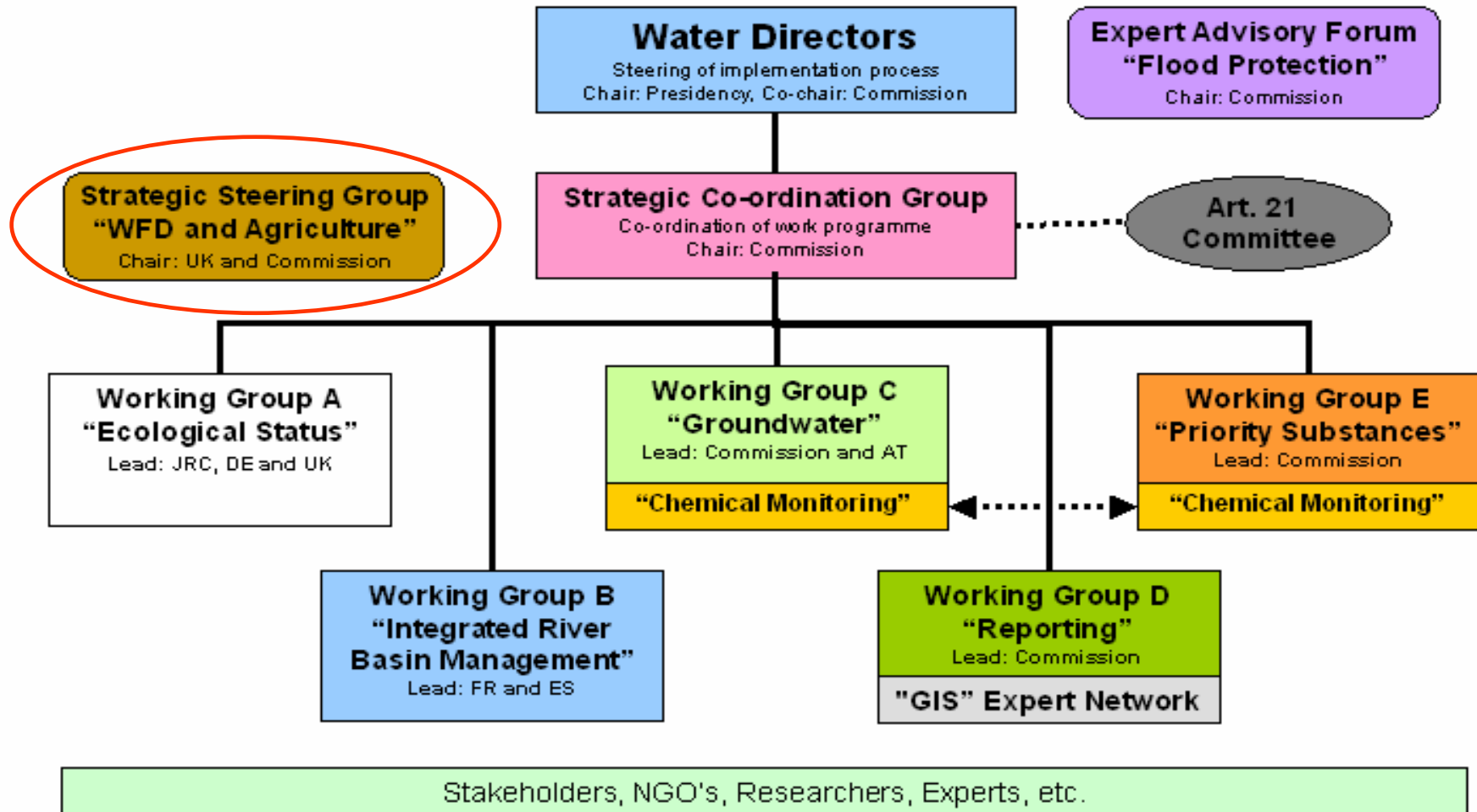


Integration at operational level of River Basin Management Plans and of Rural Development Plans



Organisation of WFD

Common Implementation Strategy 2005/2006





Action

Organizing observational network of study sites to:

- Improve approaches for environmental impact assessment and integrated management of common requirements/goals of Rural Development-WFD
- Contribute to thematic PRBs for WFD Working Group on Agriculture

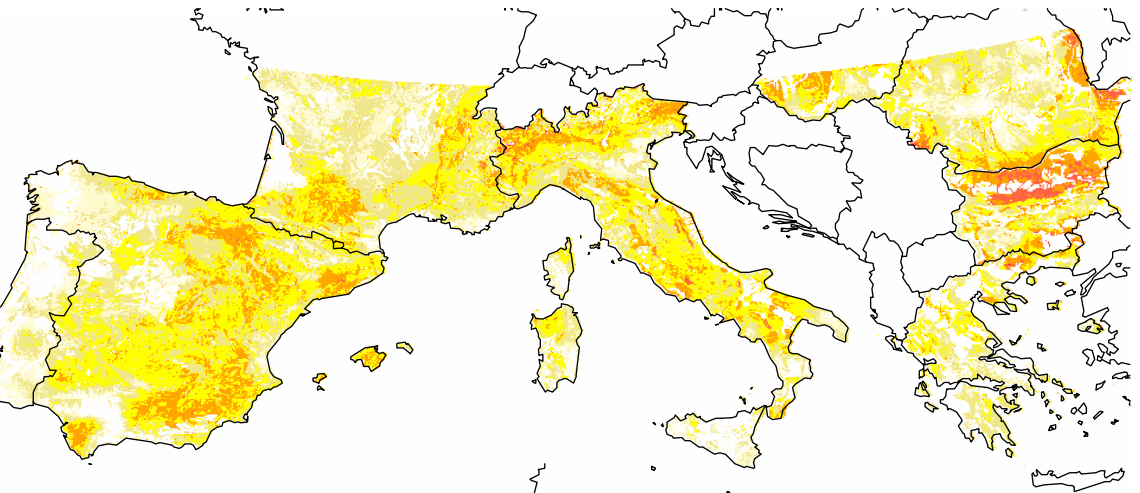
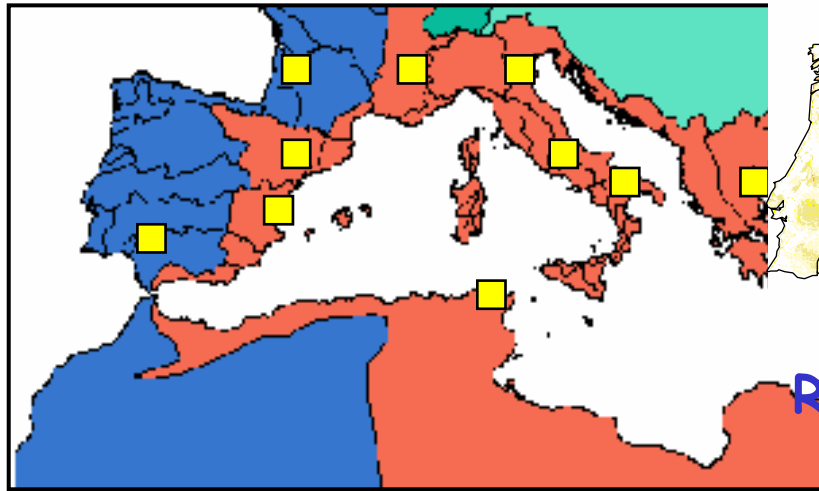


Testing of indicators



- ✓ Where are the areas that require specific protection due to their environmental sensitivity?
- ✓ Where there is a need for changing current land-use systems in order to arrive at a sustainable agriculture?
- ✓ How can the spatial distribution of agricultural land and of areas subject to environmental protection and nature conservation be best achieved (considering both environmental and socio-economic demands)?

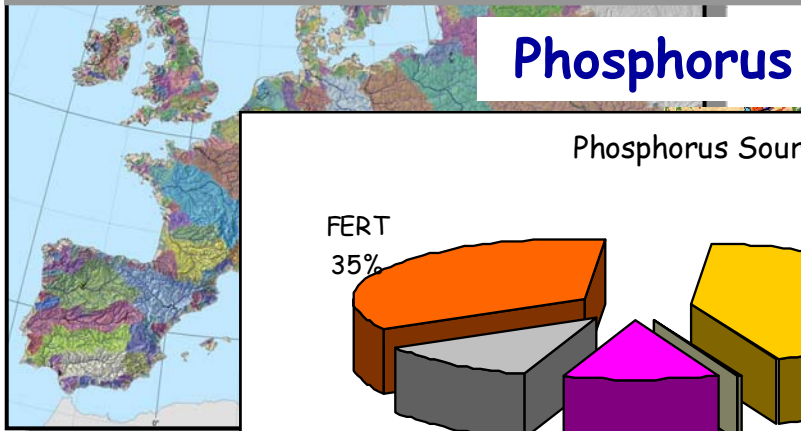
**A land-based diagnostic tool for
agriculture and environment for Europe
and the Mediterranean area**



Regional accumulated erosion potential

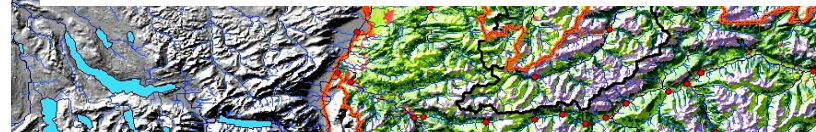
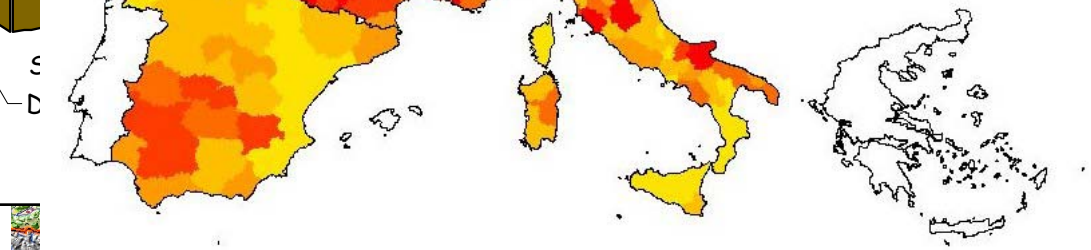
0 - 1
1 - 2
2 - 3
3 - 4
4 - 5
5 - 7
7 - 10
10 - 20
20 - 50
> 50

EU boundary
No cereal growth
No data



Complementary statistical, economic data to calculate proxy pressure indicators, e.g.

- Land-use
- Population density





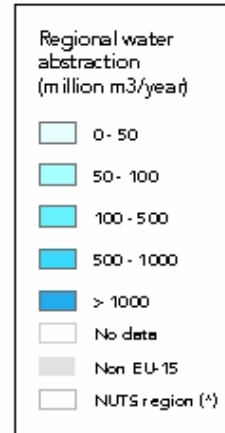
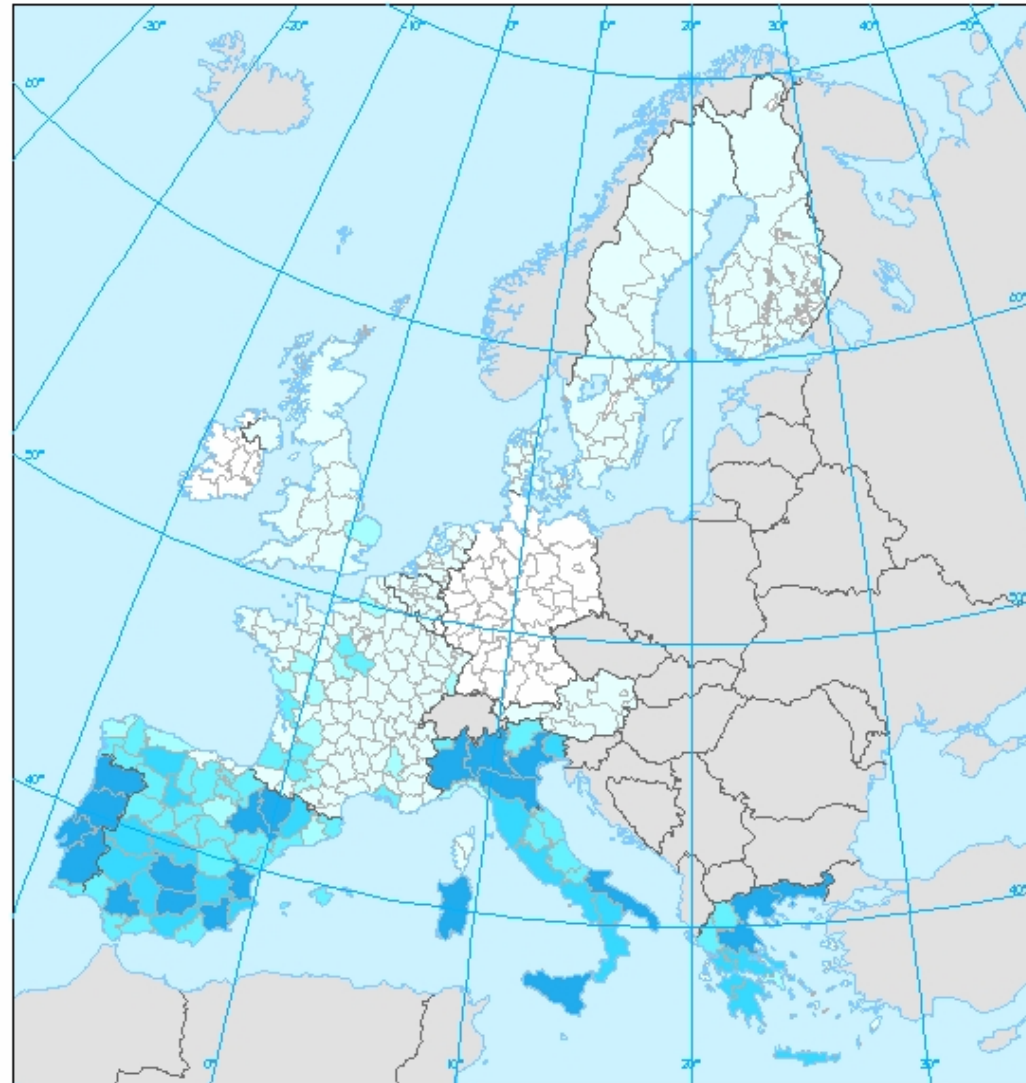
PRBs in 2nd Phase 2005-2006

- Scheldt (B, F, NL)
- Odense (DK)
- Harju (Estonia)
- Oulujoki (FIN)
- Marne, Adour-Garonne and *Rhone-Mediterranée* (F)
- Weser (D)
- Neisse (D, CZ, PL)
- *Pinios* (Greece)
- *Zagyva-Tarna* (HU)
- *Cecina and Tevere* (I)
- Suldal (Norway)
- Jiu (RO)
- *Ebro and Jucar* (Spain)
- Ribble (UK)





Address the specificity of the Mediterranean area



(*) NUTS 1: UK.
 NUTS 2: AT, BE, DE, GR, IT, LU, NL & PT.
 NUTS 3: DK, FI, FR, IE, ES & SE.
 NUTS - Nomenclature of territorial units for statistics.
 © EuroGeographics Association for the administrative boundaries.

Regional water abstraction rates for agriculture (million m³/year) during the year 2000 in the EU15



Integration of non-EU partners through the EU-MED Working Group on “Linking Rural Development with Water Management”

- ✓ Different political requirements and structure
- ✓ Inequalities in level of involvement, appreciation of environmental problems in relation to socio-economic situations
- ✓ Collaboration at technical level should bridge these gaps and prepare the road for later political commitments

http://viso.ei.jrc.it/prb_im/

Contact: michael.cherlet@jrc.it

giovanni.bidoglio@jrc.it