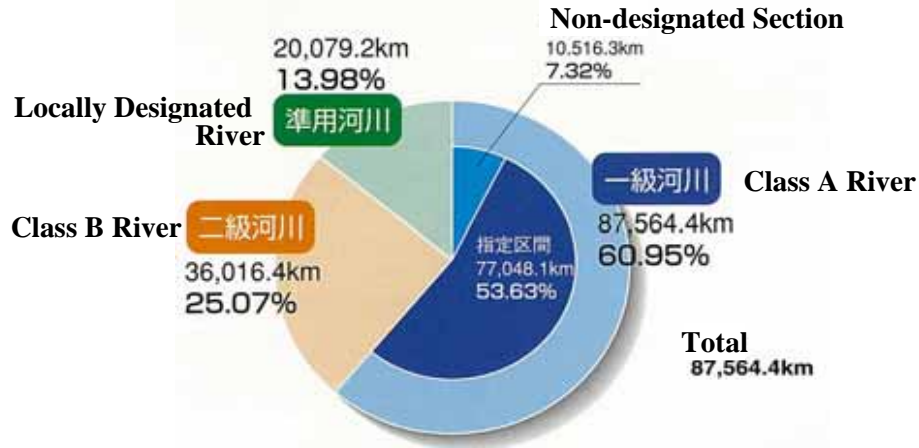
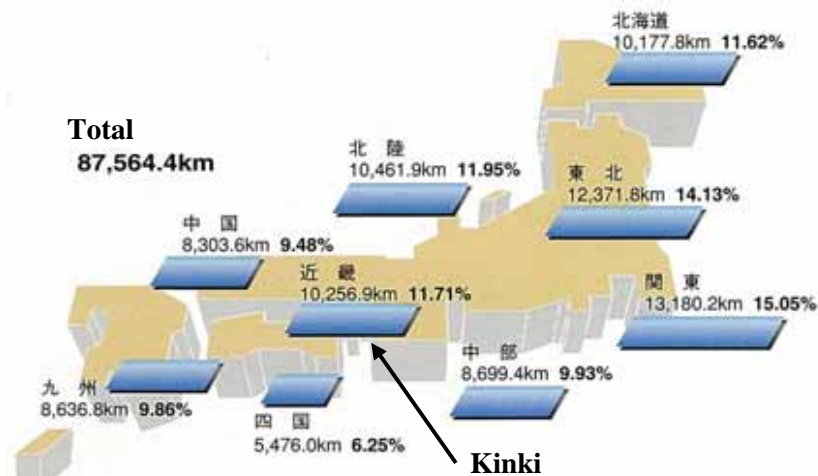


Kinki Regional Development Bureau Territorial River

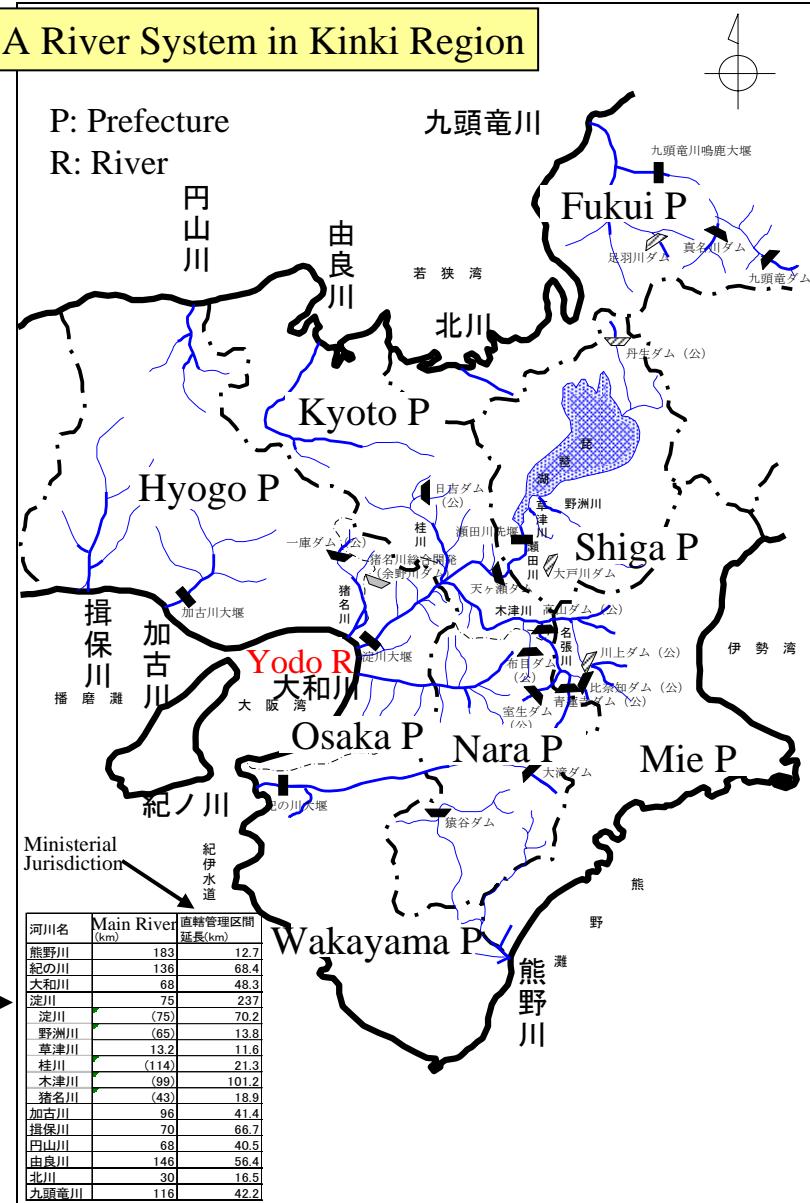
Classification of Rivers



地方整備局等別一級河川延長



Class A River System in Kinki Region



Yodo River →

River Basin Management

Flood Control Plan of Yodo River Basin



Safety Degree by River Section

River System Plan



Katsura R: Hozukyo

Yodo River System



Seta River: Shikahane Valley



昭和28年 台風13号
船井郡園部町

昭和47年 台風
20号 亀岡市



Ginbashi Area



昭和34年8月洪水
野洲郡野洲町



Iwakura Valley



昭和36年10月洪水
上野市小田

昭和34年 台風15号
名張市鍛冶町

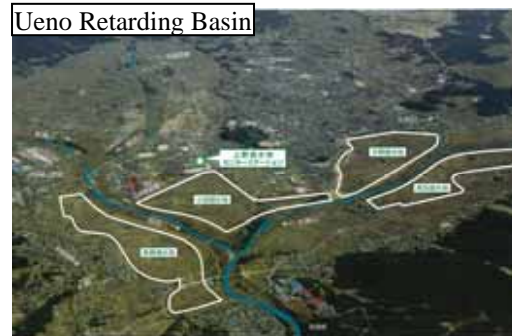
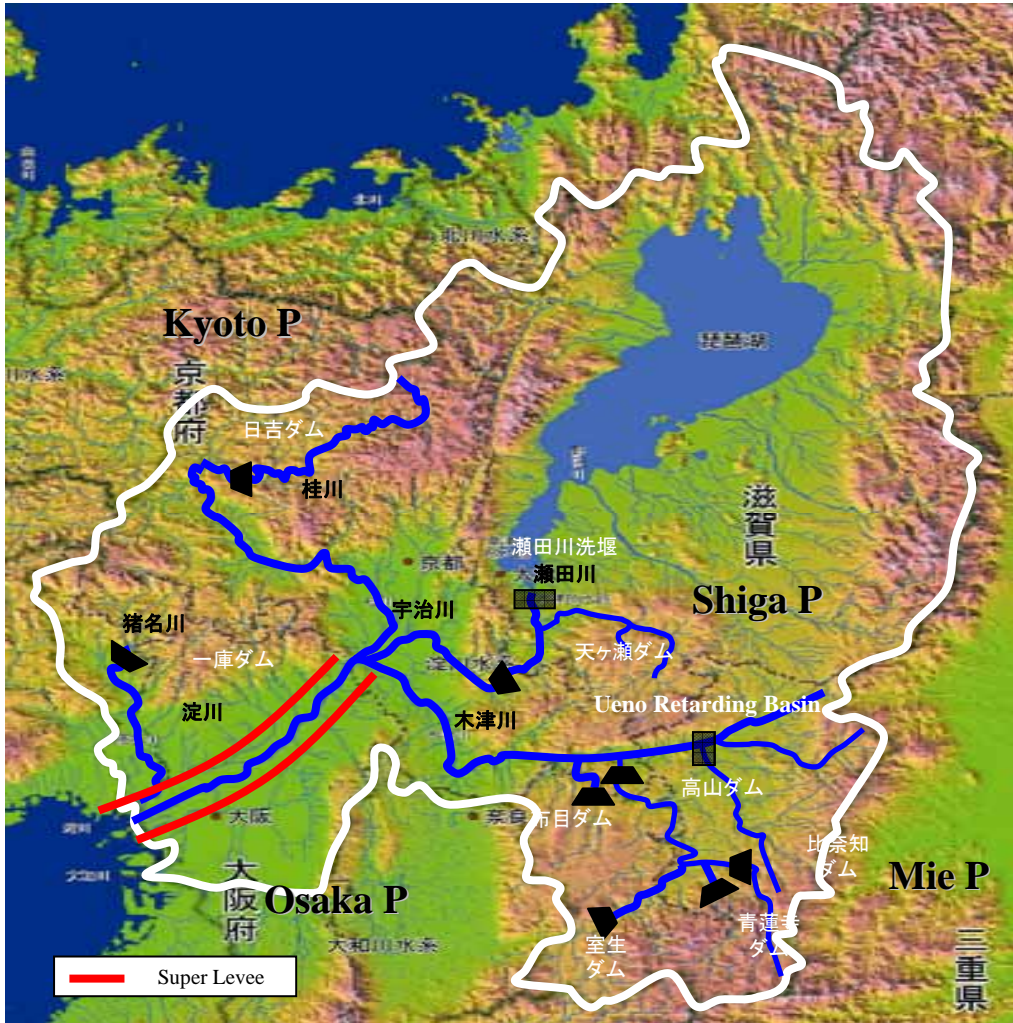
Safety Degree

- Design Level 1/200
- Design Level 1/150
- Design Level 1/100

- Reference Point
- Sub-Reference Point

River Basin Management

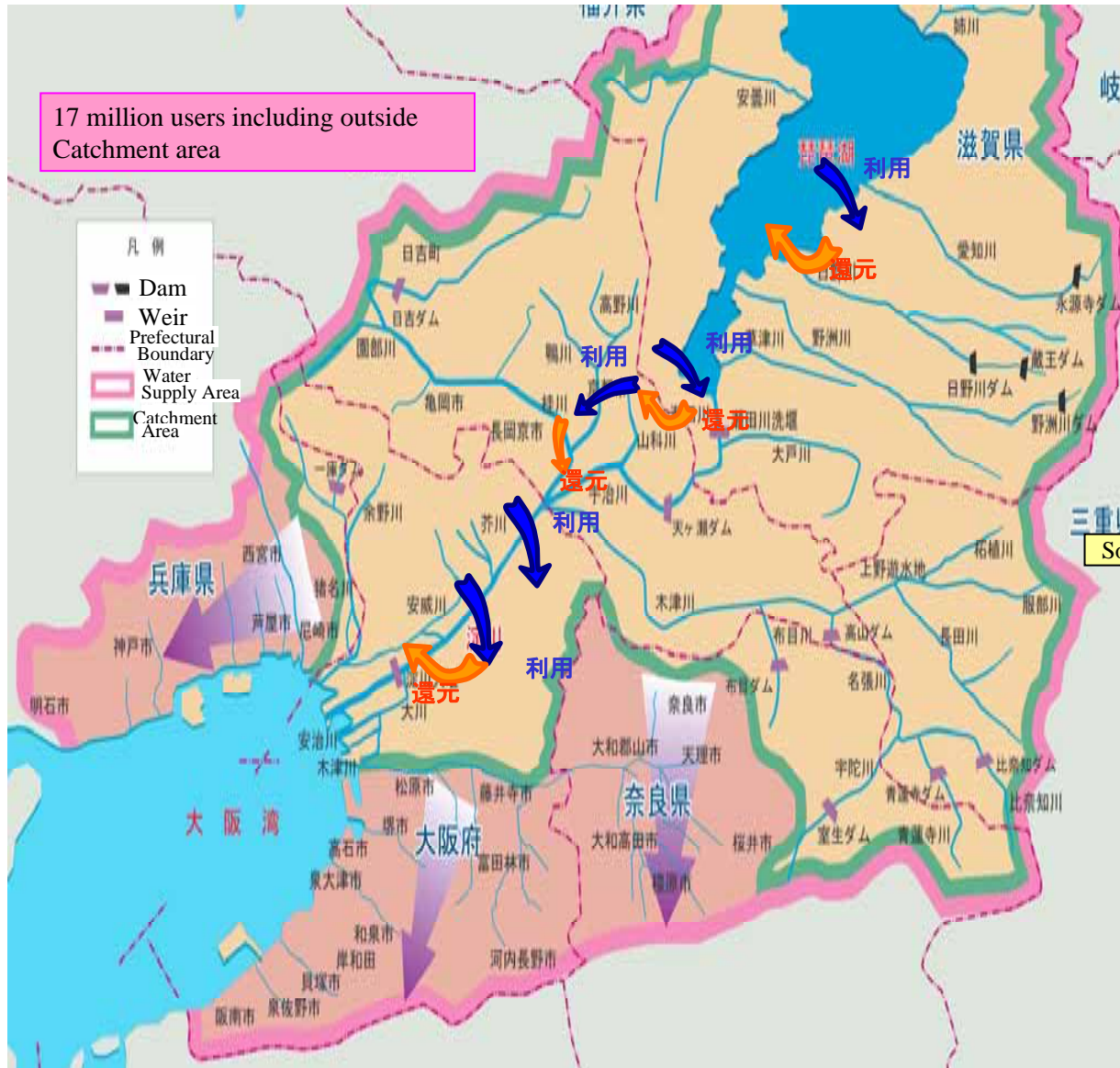
Flood Control by Dams & Retarding Basin



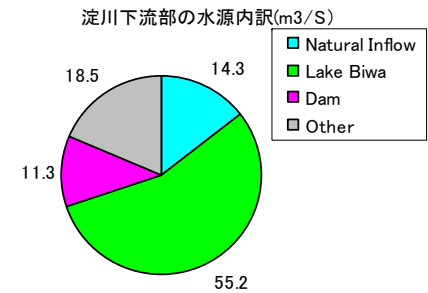
River Basin Management (Water Utilization)

Yodo River System

Water Use in Lake Biwa & Yodo River

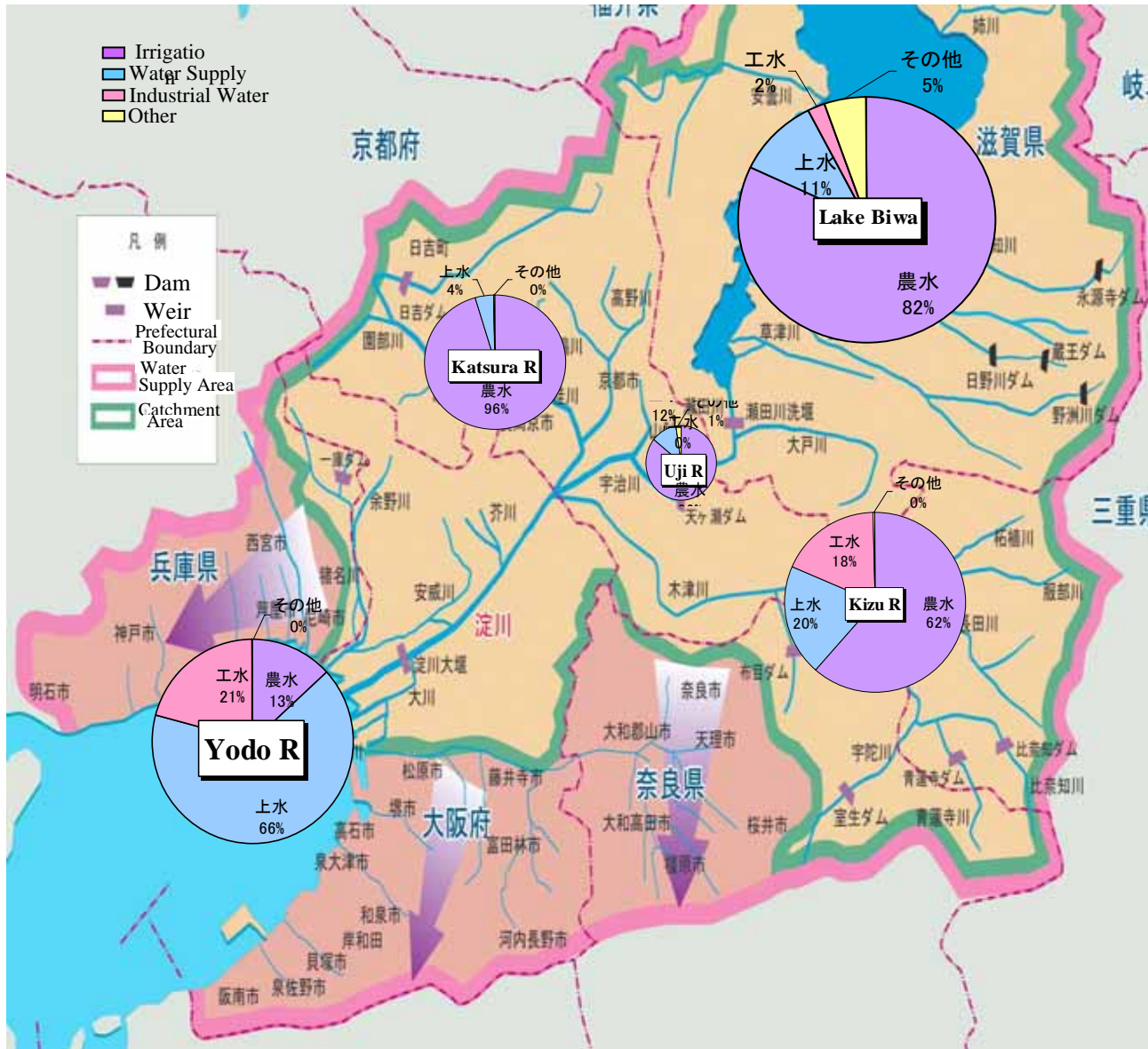


Source of Downstream Yodo



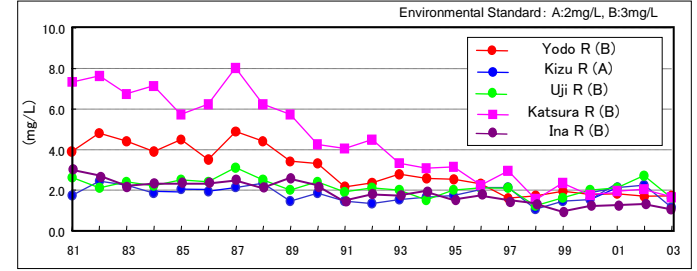
Lake Biwa is a valuable source of water due to its abundance and stability. Downstream depends greatly on Lake Biwa as a source.

River Basin Management (Water Utilization)

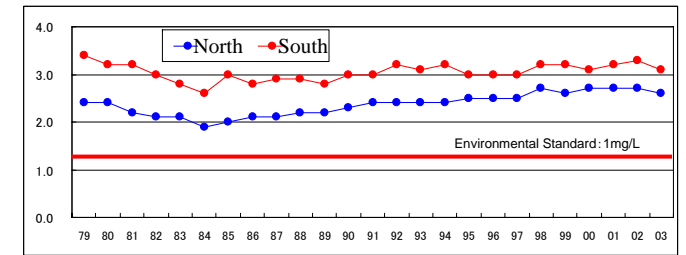


Secular Variation of Water Quality

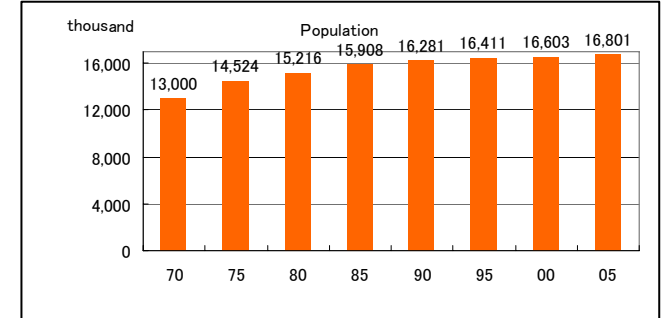
Secular Variation of Water Quality in Yodo River System (BOD75%)



Secular Variation of Water Quality, Lake Biwa (COD Annual Average)



Population of Water Supply District



17 million users including outside Catchment area