

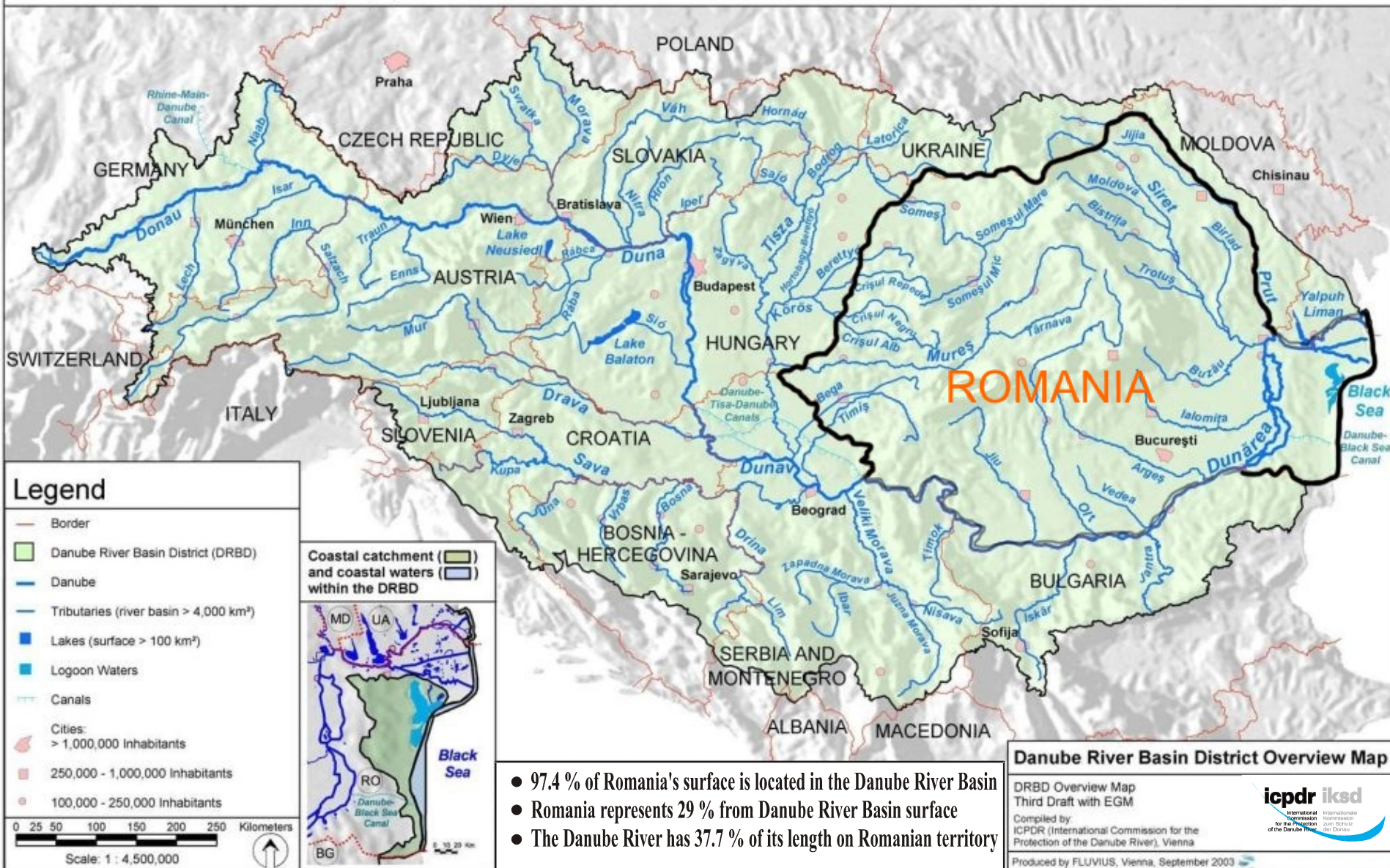
# **Implementation stage of the 2000/60/EC Directive and 2007/60/EC Directive in Romania**

**11<sup>th</sup> EURO INBO Conference**

**Plovdiv –Bulgaria  
14 November 2013**



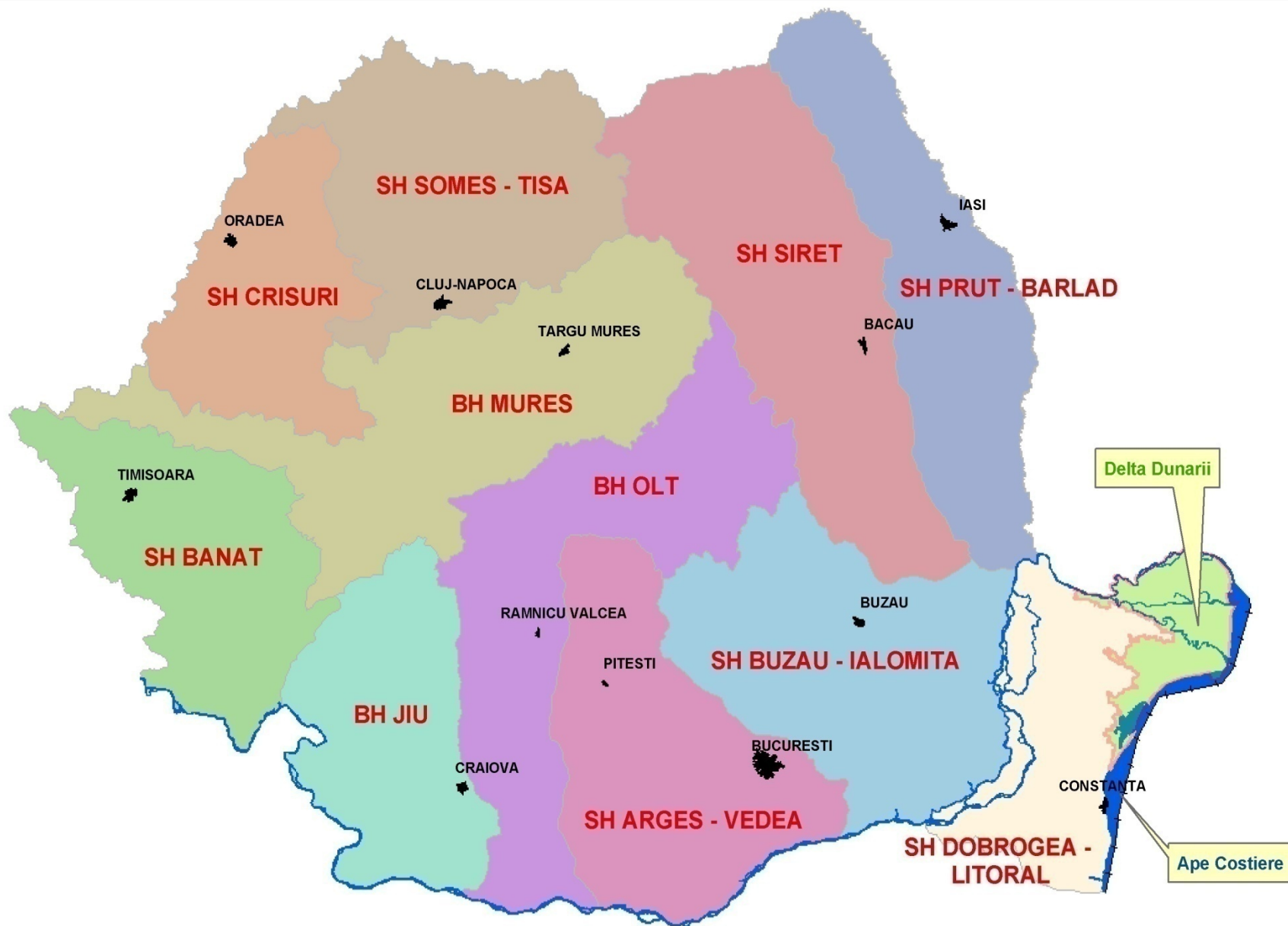
# Danube River Basin District. Overview map



# Implementation of WFD and FD in Romania


- **Legal:** Water Law 107/1996
  - amended and completed by the Law 310/2004, Law 112/2006, OUG 3/2010, Law 146/2010 for transposition of the **Water Framework Directive 2000/60/EC** and of the **Floods Directive 2007/60/EC**
- **Organizatorical:**
  - Ministry of Environment and Climate Change, Department of Water, Forests and Fisheries
  - National Administration “Apele Romane”
    - 11 River Basin Administrations
    - National Institute for Hydrology and Water Management
- **Consultative** : River Basin Committees





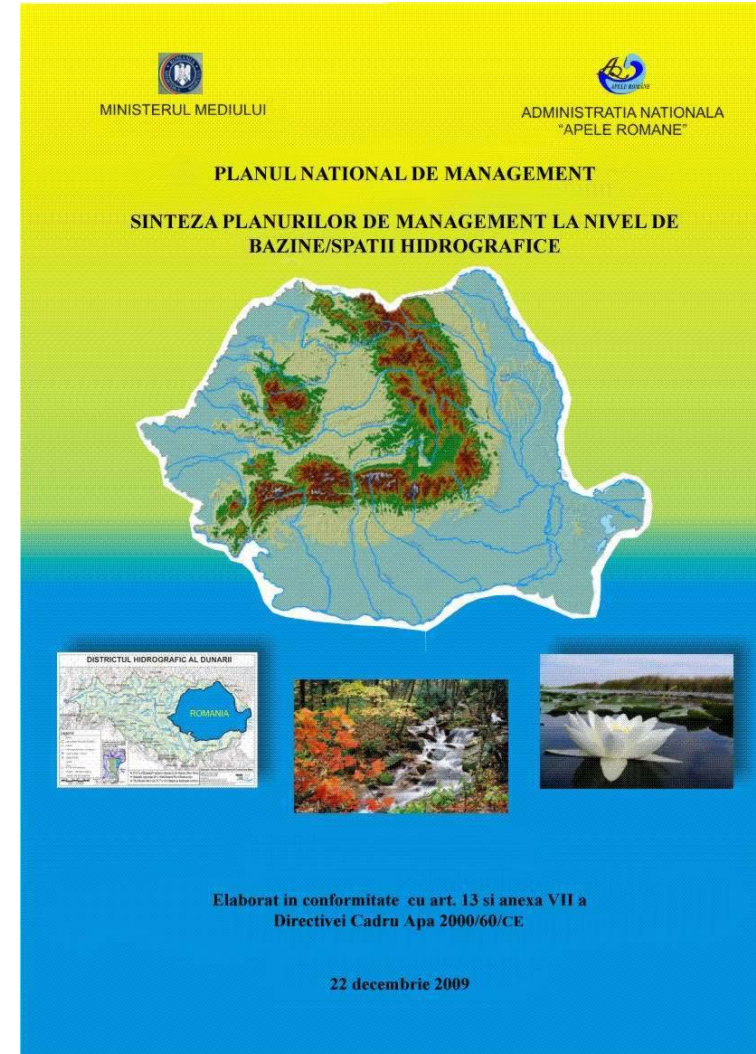
River basins /sub-units in Romania

# Implementation of WFD in Romania (1)

- ✓ **2004** : Characteristics of the river basins and review of the environmental impact of human activity; Economic analysis of water uses
  - ✓ **2006** : Defining of monitoring networks and implementation of the monitoring programs
  - ✓ **2007** : Identification of significant water management issues at the river basin level
  - ✓ **2008 – 2010** : Elaboration, approval and reporting of the first River Basin Management Plans and of the first National Management Plan
- 

# First National Management Plan

- ❑ National Management Plan represents the synthesis at the national level of 11 River Basin Management Plans (RBMPs)
- ❑ Elaboration at 22 December 2009
- ❑ RBMPs were presented and approved in the River Basin Committees
- ❑ Reporting to EC : 22 March 2010
- ❑ Approved through Governmental Decision 80/2011 after Strategic Environmental Assessment procedure



# Implementation of WFD in Romania (2)

✓ **2012** : Elaboration and reporting of the Interim Report on the Programs of Measures implementation

✓ **On going activities - 2013**

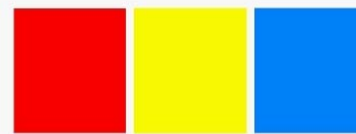
- Update of characteristics of the river basins, review of the environmental impact of human activity and economic analysis of water uses
- Interim overview of significant water management issues at the river basin level

✓ **Future activities: 2014 – 2016**

- Elaboration, approval and reporting of the second River Basin Management Plans and of the second National Management Plan

# Implementation of FD in Romania (1)

- ✓ **2010 - 2012 : 1<sup>st</sup> stage of FD implementation – Preliminary Food Risk Assessment – finalised**
  - Collect and analyze information on historical floods within an **unitary template from RB Authorities** at NIHWM level
  - **PFRA and APSFR methodologies - unitary scientific approach at national level** guided by NIHWM - N.A. Apele Romane



**RAPORT**

**EVALUAREA  
PRELIMINARĂ  
A RISCULUI LA  
INUNDAȚII**

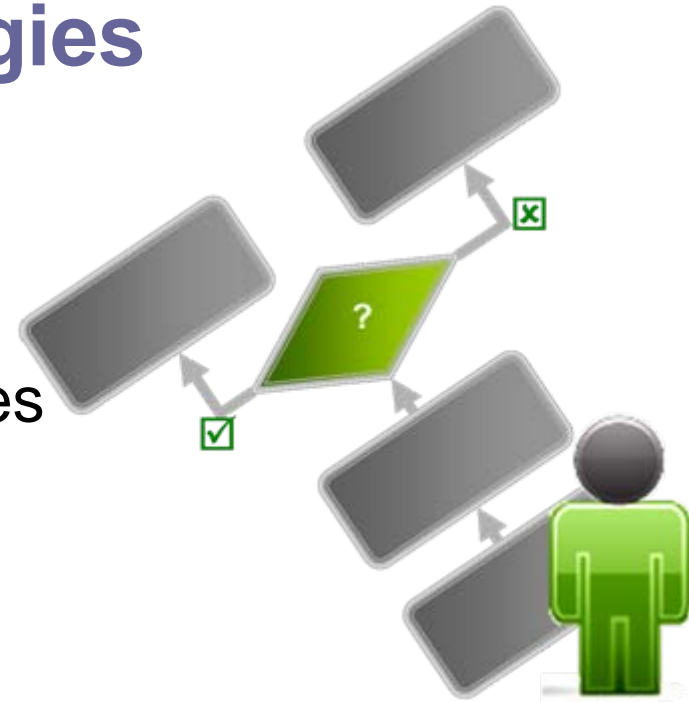


**ADMINISTRAȚIA BAZINALĂ DE APĂ  
BANAT**

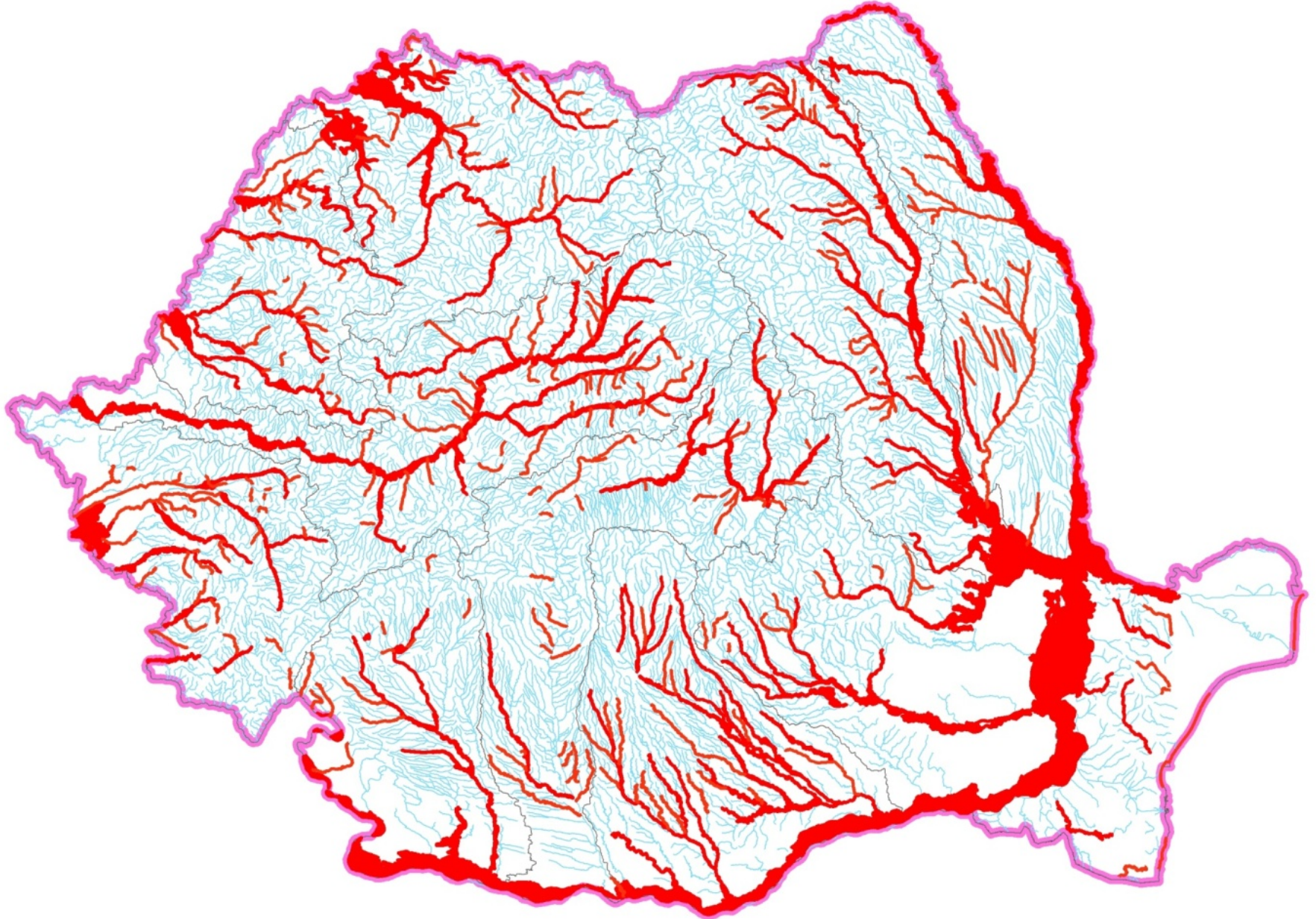


# PFRA and APSFR methodologies

- 💧 Overall Approach
- 💧 Past Adverse Consequences
- 💧 Significant Adverse Consequences
- 💧 Potential Adverse Consequences
- 💧 Long Term Developments
- 💧 Issues Article4\_2\_d
- 💧 International Information Exchange
- 💧 Fatalities Description
- 💧 Summary of Methodology
- 💧 Summary of Coordination



# Areas with Potential Significant Flood Risk – APSFR



# Implementation of FD in Romania (2)

✓ **March 2012 : Reporting to EC - Provided information: GIS maps, data, methodologies, uploaded on EIONET site**

2010

- competent authorities and coverage of the River sub-basins/sub-units for the elaboration of the FRMP

22.03.2012

- **PFRA**
- 39 events at national level
- 3 events for Danube

22.03.2012

- **APSFR**
- 375 Areas with Potential Significant Flood Risk.





# Implementation of FD in Romania (2)



- ✓ **Feb. 2013 Request of clarification from the EC**
  - The full reports underpinning the assessments
  - Information on where the PFRA is made publicly available for RB Districts (web-link) as required by Art. 10 of the FD
- ✓ **June 2013 Answer completed and sent to the EC**
- ✓ **On-going activities**
  - Flood Hazard maps – result of the on-going Programme *National Plan for floods prevention, protection and mitigation* (financed through state budget / H.G. 1309/2005 and *Env.SOP* )
- ✓ **Future activities**
  - Flood Risk maps



## Difficulties (examples):

### ■ WFD

- ✓ Establishing the link between **hydromorphological indicators** and **ecological status**.

### ■ FLOOD Directive :

- ✓ Availability of hazard maps for all APFSR defined and reported to EC (areas without hydraulic modelling at this stage !)
- ✓ Vulnerability data availability – **qualitative approach for risk assessment** for the 1<sup>st</sup> cycle of reporting.

Thank for your kind attention !