

# **WATER FRAMEWORK DIRECTIVE**

## **COMMON IMPLEMENTATION STRATEGY**

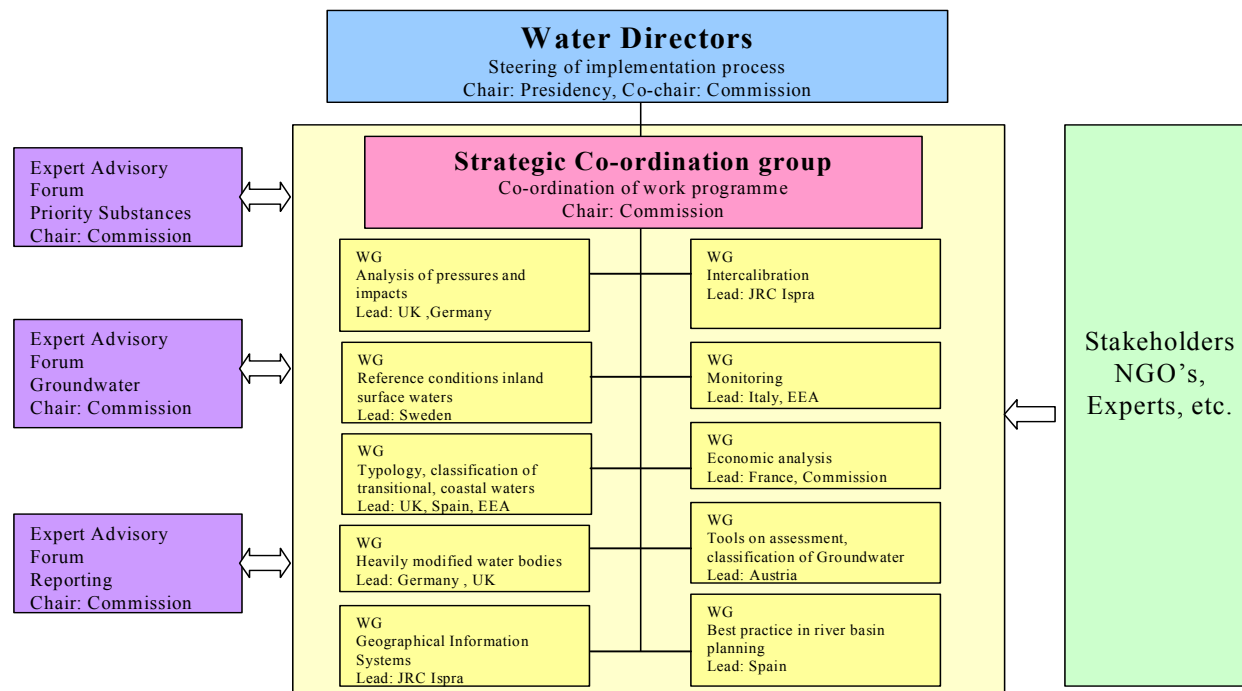
# WFD: WHY A COMMON IMPLEMENTATION STRATEGY?

- **Challenges widely shared by the Member States**
- **Demanding timetable**
- **Complexity of the text**
- **Diversity of possible solutions to scientific, technical and practical questions**
- **Ensure efficiency, transparency and...comparability**

## **WFD C.I.S. OBJECTIVES**

- **Coherence and comparability**
- **Common understanding and approach**
- **Joint efforts and activities**
- **Limit risks of bad application**
- **Share experience and information**
- **Develop guidance**
- **Improve the information management**

## General Organization 2001-2002



# **C.I.S. ACTIVITIES –TECHNICAL ISSUES.**

- **Analysis pressure and impact**
- **Heavily modified waters**
- **REFCOND rivers and lakes**
- **Reference conditions coastal water**
- **Intercalibration**
- **Economic analysis**
- **Monitoring**
- **Assessment and classification of groundwater**
- **Best practice in River Basin Planning**
- **GIS**

## **C.I.S. FIRST RESULTS**

**WG 2.8 : Report on Statistical aspects of the identification  
of the Groundwater Pollution,**

**WG 2.6 : Guidance document on Water and Economics,**

**WG 2.9 : WP1 - Document on Identification RBD,**

**WG 2.2 : Synthesis report on Case Studies - Identification  
and Designation of HMWB,**

**WG 4.1 : Establishment of a Pilot River Basin Network,**

**General outline for all Guidance Documents - common text.**

**WG 2.1 : Guidance document on Analysis of pressures and impacts,**

**WG 2.2 : Guidance document on HMWB,**

**WG 2.4 : Guidance document on Transitional and coastal waters,**

**WG 2.5 : Guidance document on Intercalibration,**

**WG 2.7 : Guidance document on Monitoring,**

**WG 2.9 : Guidance document on Public participation,**

**WG 3.1 : Guidance document on GIS,**



## **C.I.S FIRST RESULTS (3)**

**WG 4.1 : Establishment the Terms of Reference and working schedule,**

**WG 2.3 and WG 2.9: Draft version of Guidances on Reference conditions for inland surface waters and on Planning process,**

**Revision of common text for all Guidance Documents**

**-reference to wetlands and floods,**

**Guidance document on Water Bodies,**

**Presentation of the follow-up of the CIS for 2003/2004.**



# **Common Implementation Strategy 2003/2004**

## **New Working Groups**

- ⇒ **Working Group on "Ecological Status" ( WG 2A)**
- ⇒ **Working Group on "Integrated River Basin Management" (WG 2B)**
- ⇒ **Working Group on "Groundwater" (WG 2C) (after last meeting of EAF Groundwater)**
- ⇒ **EAF Reporting (WG 2D)**

# Attribution of existing WGs

## Expert Advisory Forum

- 1) Priority Substances
- 2) Groundwater

Chair: Commission

## Water Directors

Steering of implementation process  
Chair: Presidency, Co-chair: Commission

## Strategic Co-ordination group

Co-ordination of work programme  
Chair: Commission

### New WG 2.A

#### Ecological Status

WG 2.5  
IC

WG 2.3  
Refcond

WG 2.4  
Coast

WG 2.7  
Monit (sw)

### New WG 2.B

#### Integrated RBM

WG 2.1  
Impress

WG 2.6  
WATECO

WG 2.2  
HMWB

WG 2.9  
Proclan

4.1  
PilotRB

#### Groundwater

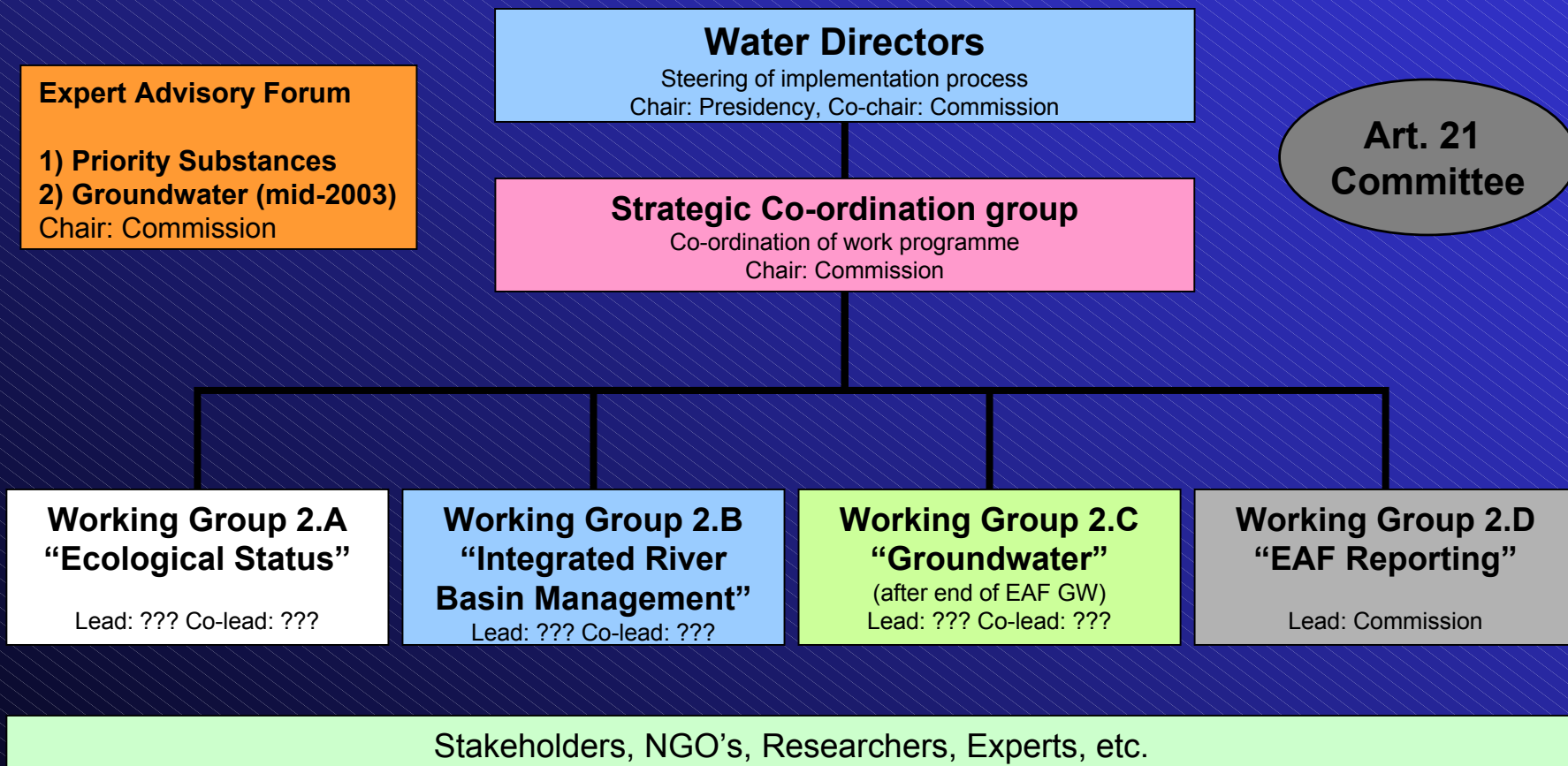
WG 2.8  
GW

#### Reporting

WG 3.1  
GIS

Stakeholders, NGO's, Researchers, Experts, etc.

# New C.I.S. organisation



## **C.I.S. 2003-2004 Key working areas**

- ⇒ Pilot river testing (2003/2004)**
- ⇒ Intercalibration (2003-2006)**
- ⇒ New issues for guidance (see table)**
- ⇒ Maintaining network (ongoing)**
- ⇒ Manual for Integrated RBM (2004/2005)**

# Proposed priority issues (1)

N o	Issue	Working Group	Timeframe
1	Management of wetlands in the context of the WFD	WG 2.B – IRBM	Start:Nov 02 End:May 03
2	Classification of ecological status including the use of physico-chemical and hydromorphological parameters	WG 2.A – Ecological Status	Start:Dec 02 End: Oct 03
3	Harmonisation of typology (in particular for transitional and coastal waters)	WG 2.A – Ecological Status	Start: Feb 03 End: Nov. 03
4	Assessment of eutrophication in the context of different European directives	WG 2.A – Ecological Status	Start: May 03 End: May 04
5	Integration of economic issues in new guidance documents (baseline scenario, scale)	WG 2.B – IRBM	Start: Feb. 03 End: May 04

VALENCIA -REMOC -NOV 2003



## Proposed priority issues (2)

N o	Issue	Working Group	Timeframe
6	Addressing of economical methodological aspects (such as the assessment of environmental costs or the assessment of the incentive dimension of pricing)	WG 2.B – IRBM (drafting group to be established as follow-up of WATECO)	Start: Feb. 03 End: Nov. 04
7	Preparation of river basin management plans and programmes of measures including the integration of different river basin management tasks	WG 2.B – IRBM (link to EAF Reporting)	Start: Sept.03 End: Dec 04
8	Guidelines for reporting under the WFD	EAF Reporting (for preparation of Art. 21 Committee)	Start: already End: Jan 04
9	Characterisation and monitoring of groundwaters	EAF GW and after termination of EAF, new WG 2.C Groundwater	Start: March 03 End: March 04



## **Working Group 2.A "Ecological Status"**

### **Core activity:**

⇒ **intercalibration**

### **Other activities:**

⇒ **Initiatives on harmonisation of typology**

⇒ **Guidance on classification**

⇒ **Guidance on assessment criteria for eutrophication**

**Number of drafting groups: 2-3**

## **Working Group 2.B**

### **“Integrated River Basin Management”**

#### **Core activity:**

⇒ **pilot river testing and economics**

#### **Other activities:**

⇒ **Guidance on wetlands**

⇒ **Guidance on preparation of river basin management plans including programme of measures**

⇒ **Guidance on flood protection (best practices)**

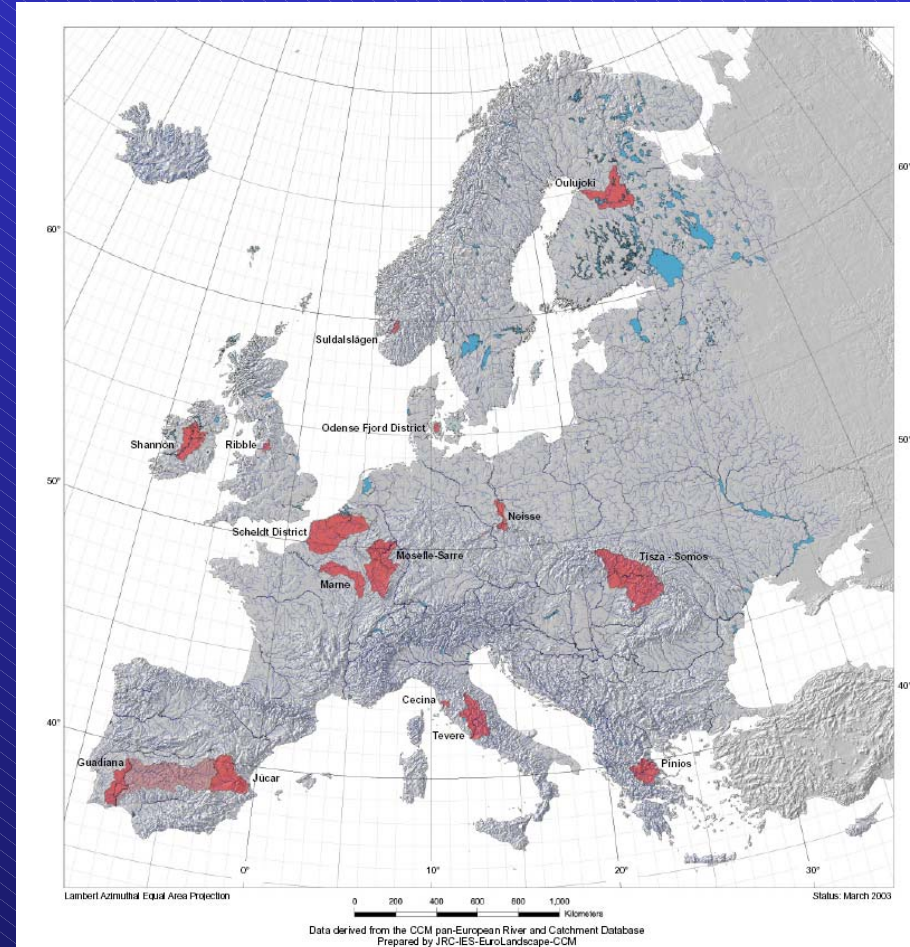
**Number of drafting groups: 3-4**

VALENCIA -REMOC -NOV 2003

# Selection of Pilot River Basins

*Proposals endorsed by the Water Directors*

- B, F, NL (Scheldt),
- D, F, Lux (Moselle-Sarre)
- France (Marne)
- Ireland (Shannon)
- Denmark (Odense)
- Finland (Oulujoki)
- Norway (Sudalsvassdraget)
- Portugal (Guadiana)
- Spain (Júcar)
- Greece (Pinios)
- Italy (Tevere, Cecina)
- H, RO (Somos)
- CZ, D, PL (Neisse)
- UK (Ribble)



DRAFT Overview on the guidance documents tested by pilot river basins (Status: 4 March 2003)											
River Basin	GUIDANCES										
	IMPRESS	HMWB	REFCO	COAST	INTERCAL	WATECO	MONIT	Public Participati on	Planning Process	GIS	Water bodies
	1	2	3	4	5	6	7	8	9	10	11
<b>Odense/Fjord</b>											
<b>Oulujoki</b>											?
<b>Mosselle-Sarre</b>											
<b>Marne</b>											?
<b>Neisse</b>											?
<b>Somes</b>											
<b>Scheldt</b>								?			
<b>Pinios</b>											?
<b>Shannon</b>											
<b>Guadiana</b>											?
<b>Jucar</b>											
<b>Tevere</b>											
<b>Cecina</b>											
<b>Suldalsvassdraget</b>											?
<b>Ribble</b>											?
<b>Legend</b>		The PRB will test the guidance									
	?	To be clarified									



# Outcomes

➤ Real life testing in the PRBs delivers a better feedback on applying the GDs in practice than a “virtual” way of testing. In other words: implement the Art. 5 obligations and use these experiences as a test of the GDs.

**Experience Reports** – On questions (gaps) linked to the testing and on specific issues of cross cutting nature (e.g. intercalibration, groundwater)

**Outcome Report** – Final results by each PRB from which a synthesis report covering all GD testing will be derived (scope for a Drafting Group)

**A specific product** to be accomplished by the end of 2003, being a living document to assist the implementation of the Art. 5 obligations.

**Help Desk** or an equivalent?