

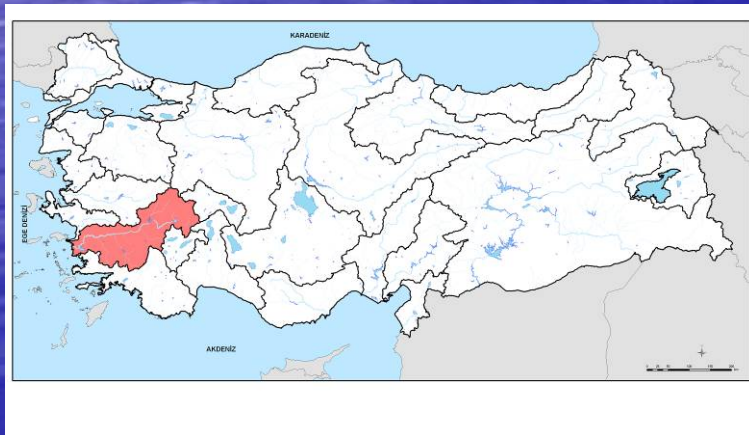
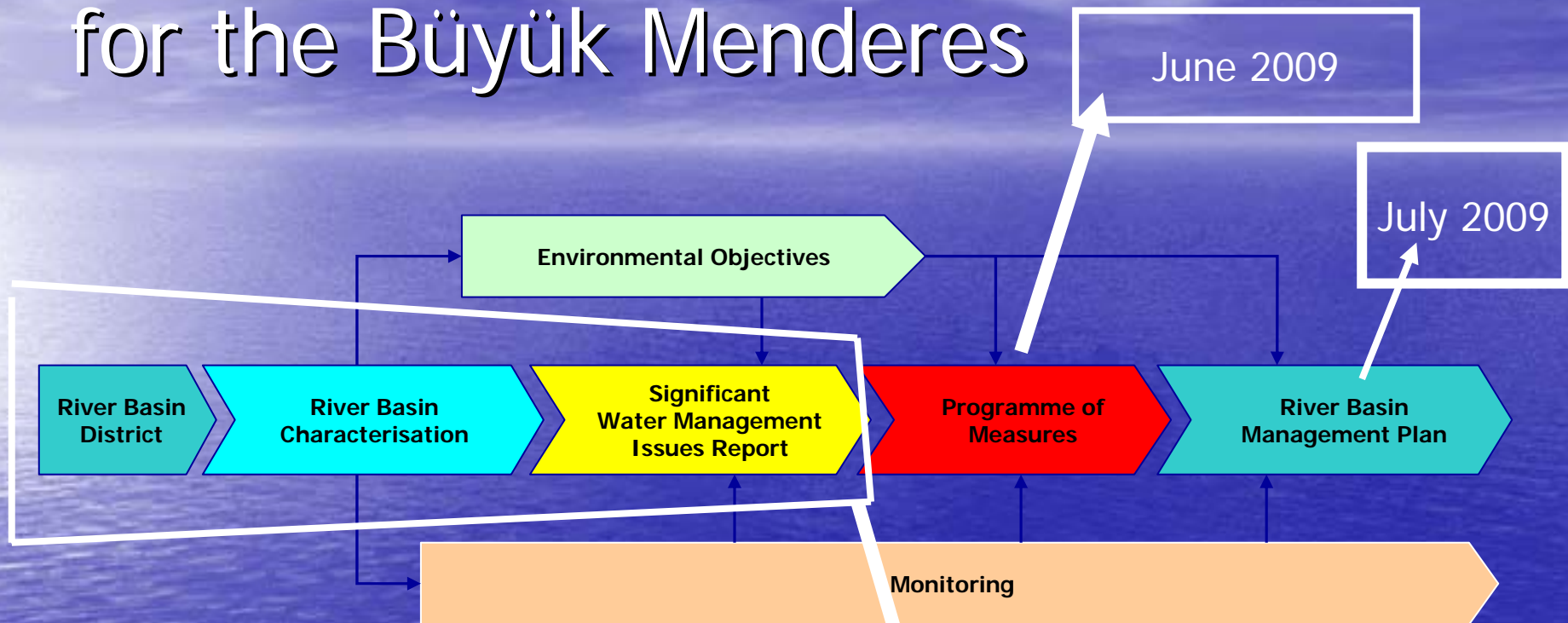
Capacity building support to the water sector

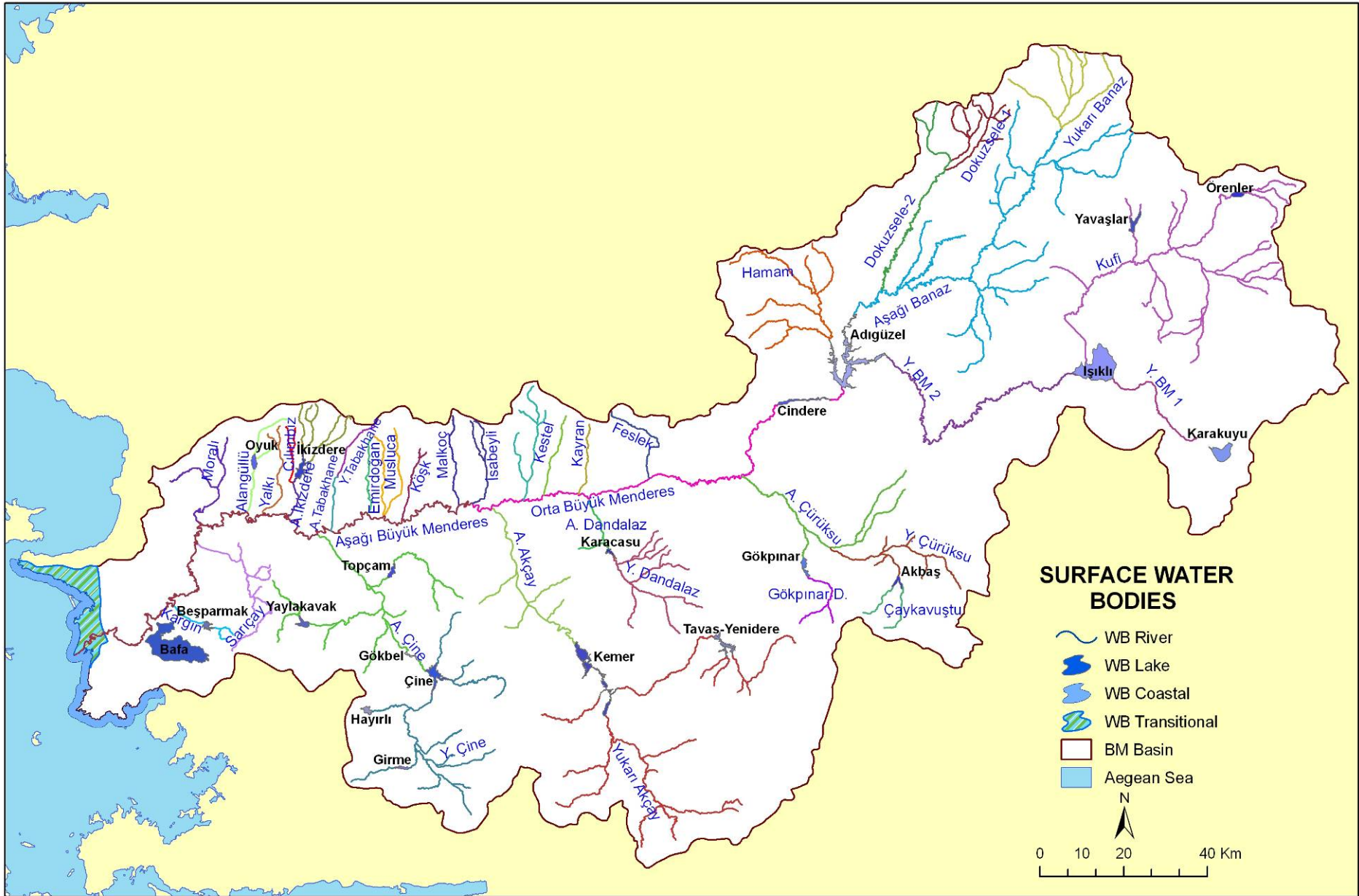
Turkey, Netherlands, United Kingdom and Slovakia

December 2007 – December 2009

€ 2.000.000 (no investment budgets)

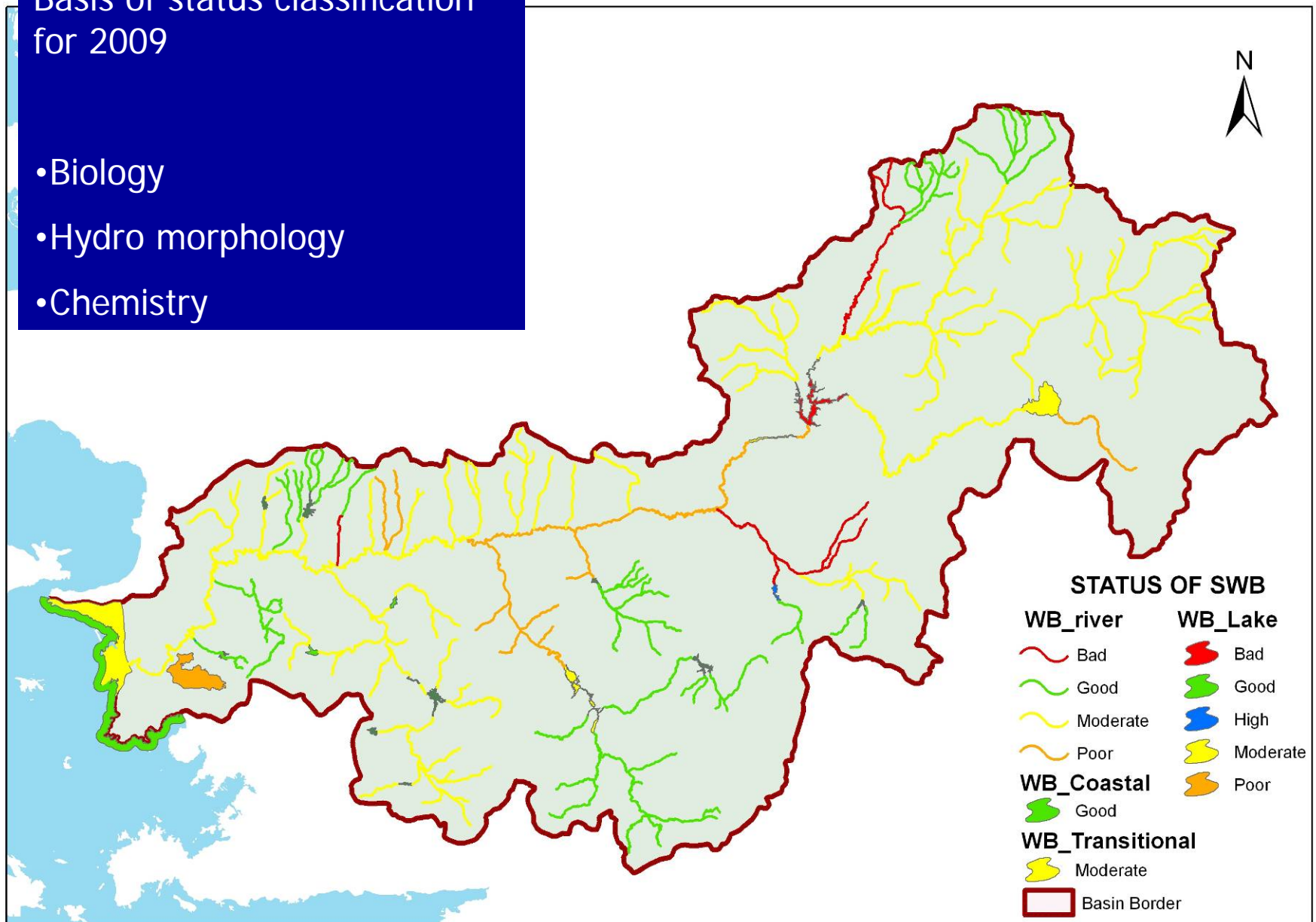
The River Basin Management Plan for the Büyük Menderes



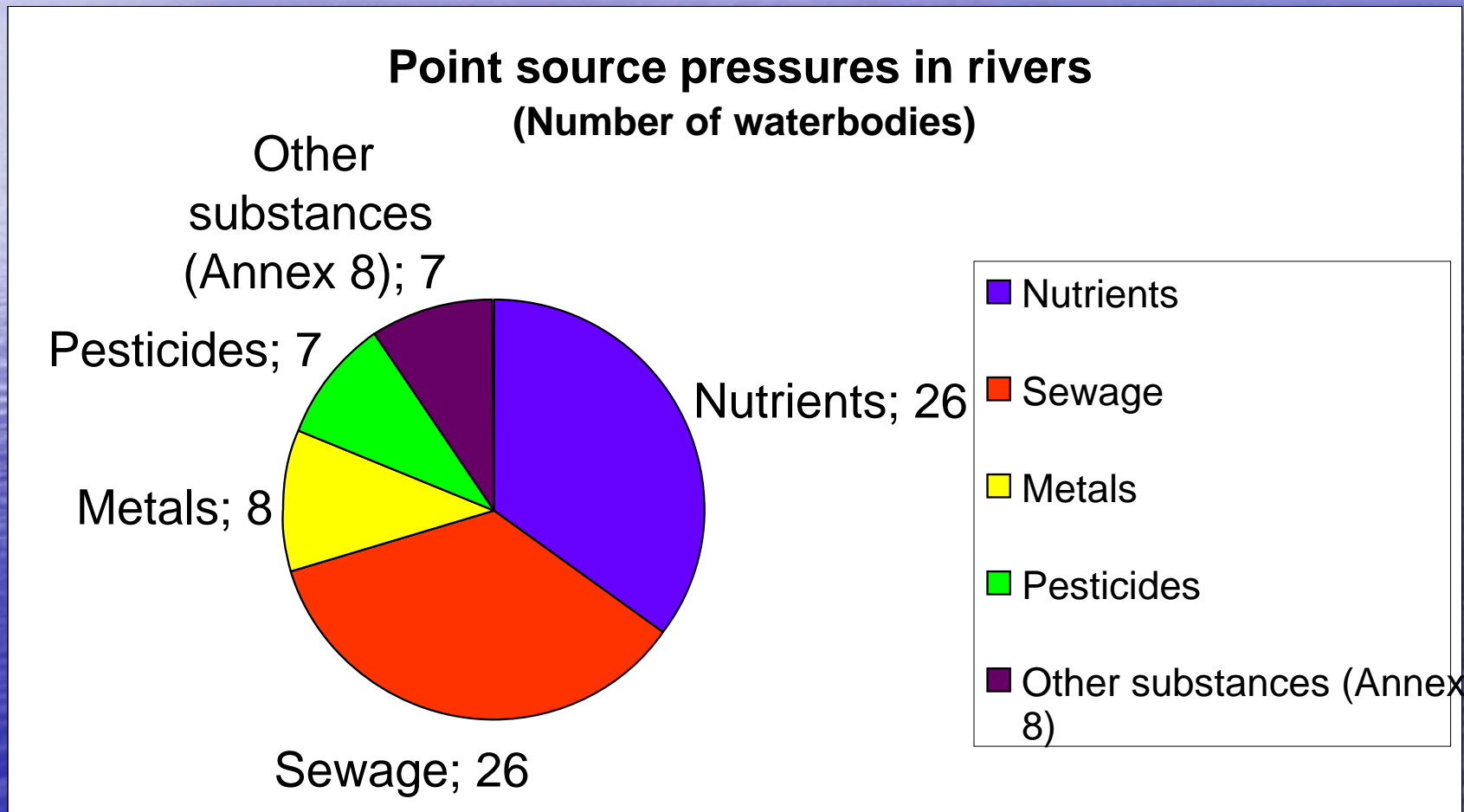


Basis of status classification for 2009

- Biology
- Hydro morphology
- Chemistry



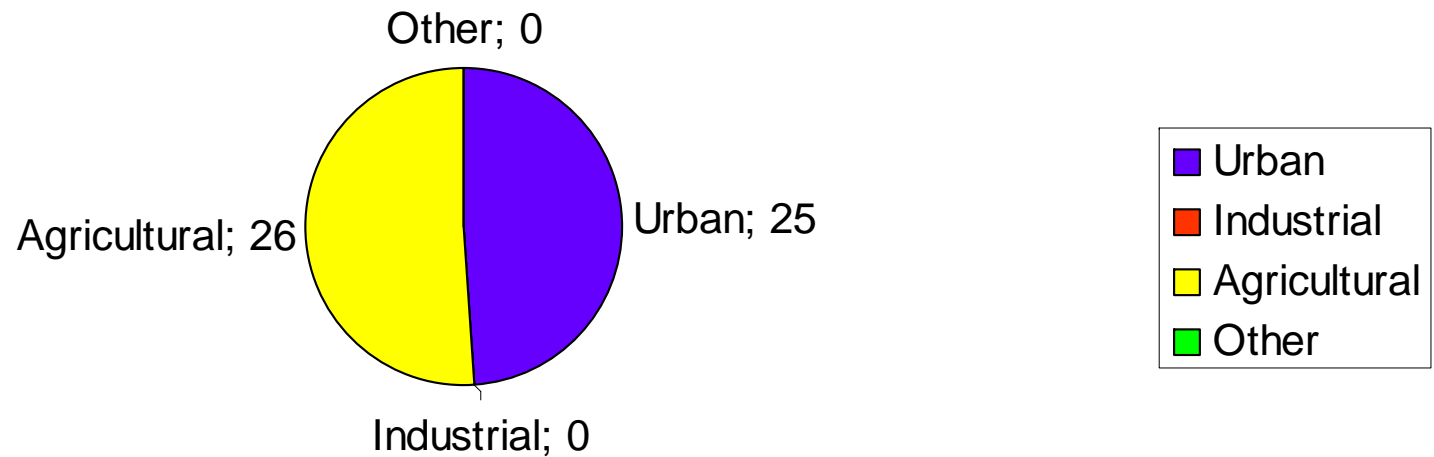
Significant water management issues



Significant water management issues

Sectors causing diffuse source pressures in rivers

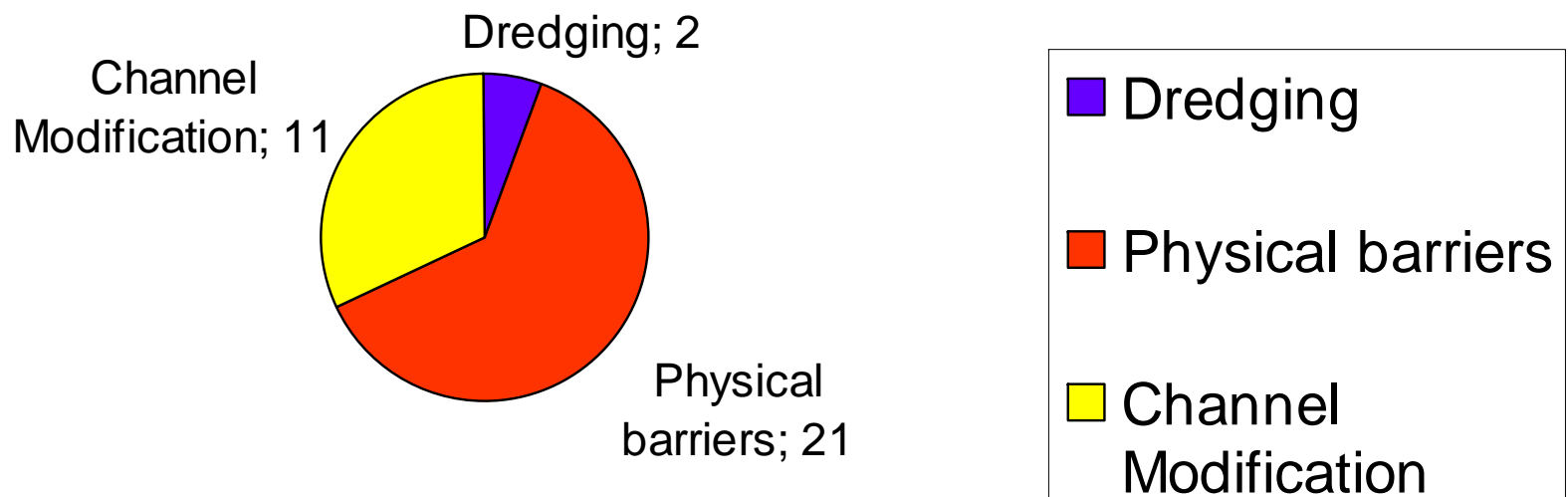
(Number of waterbodies)



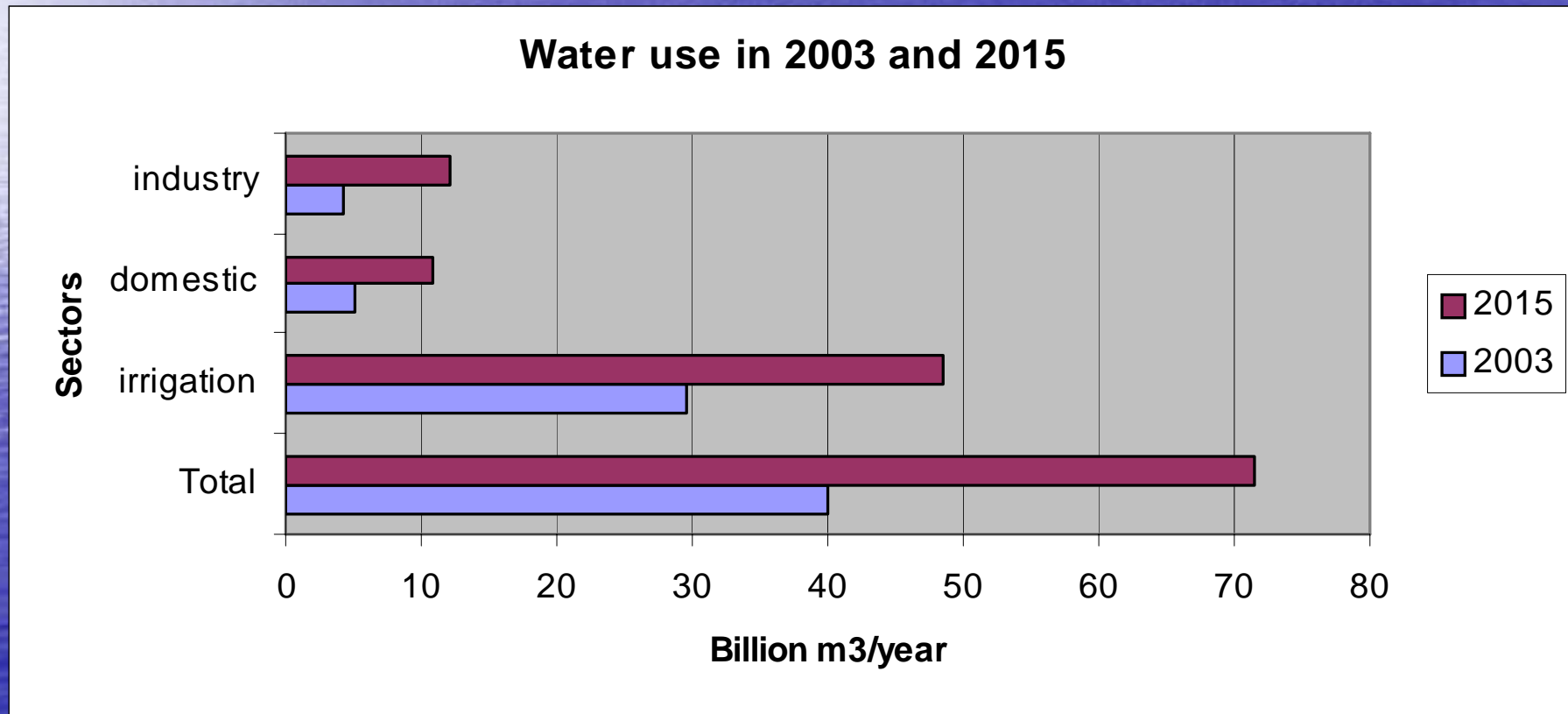
Significant water management issues

Morphological pressure in rivers

(Number of waterbodies)



Significant water management issues

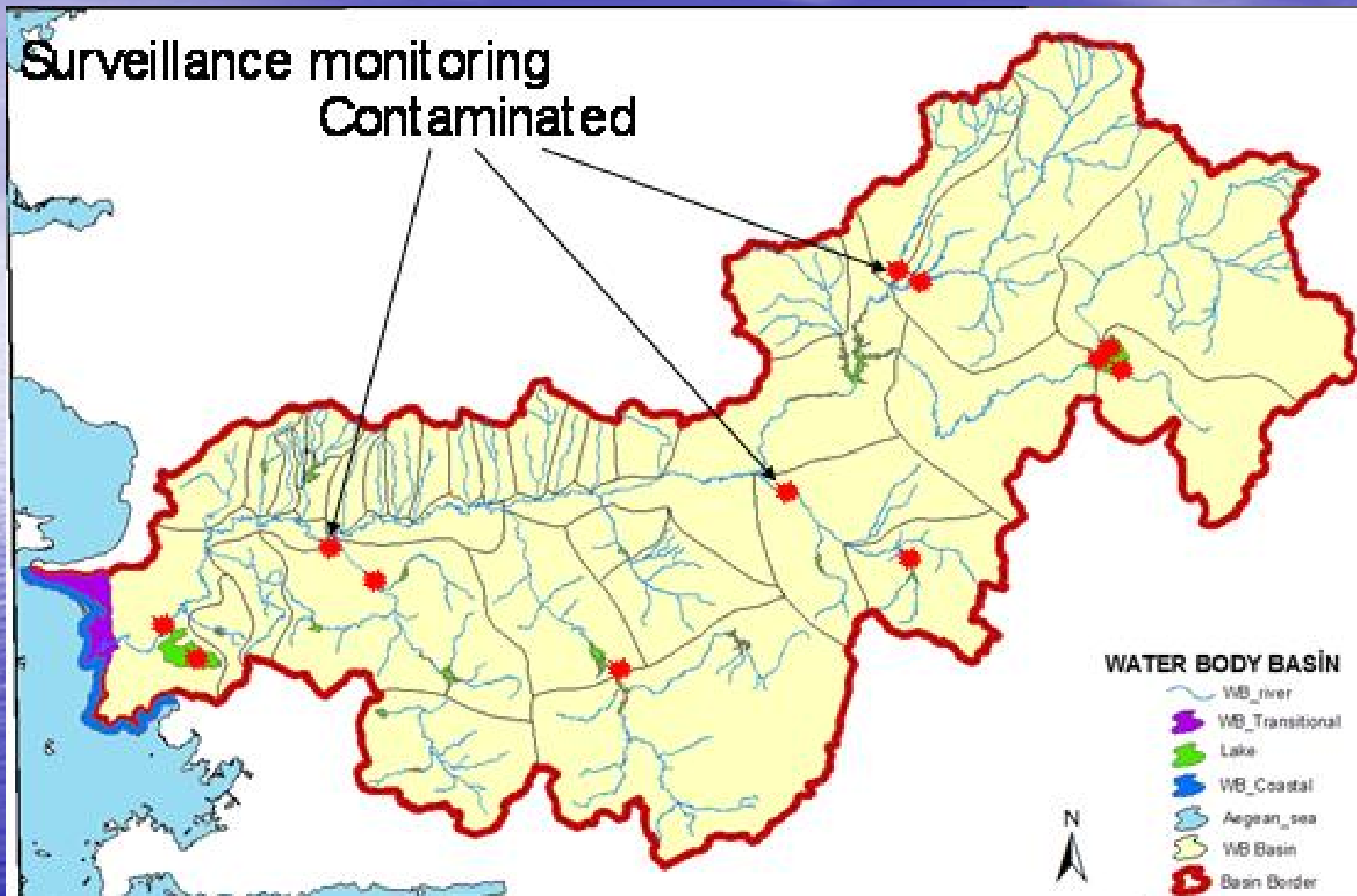


River basin management plan

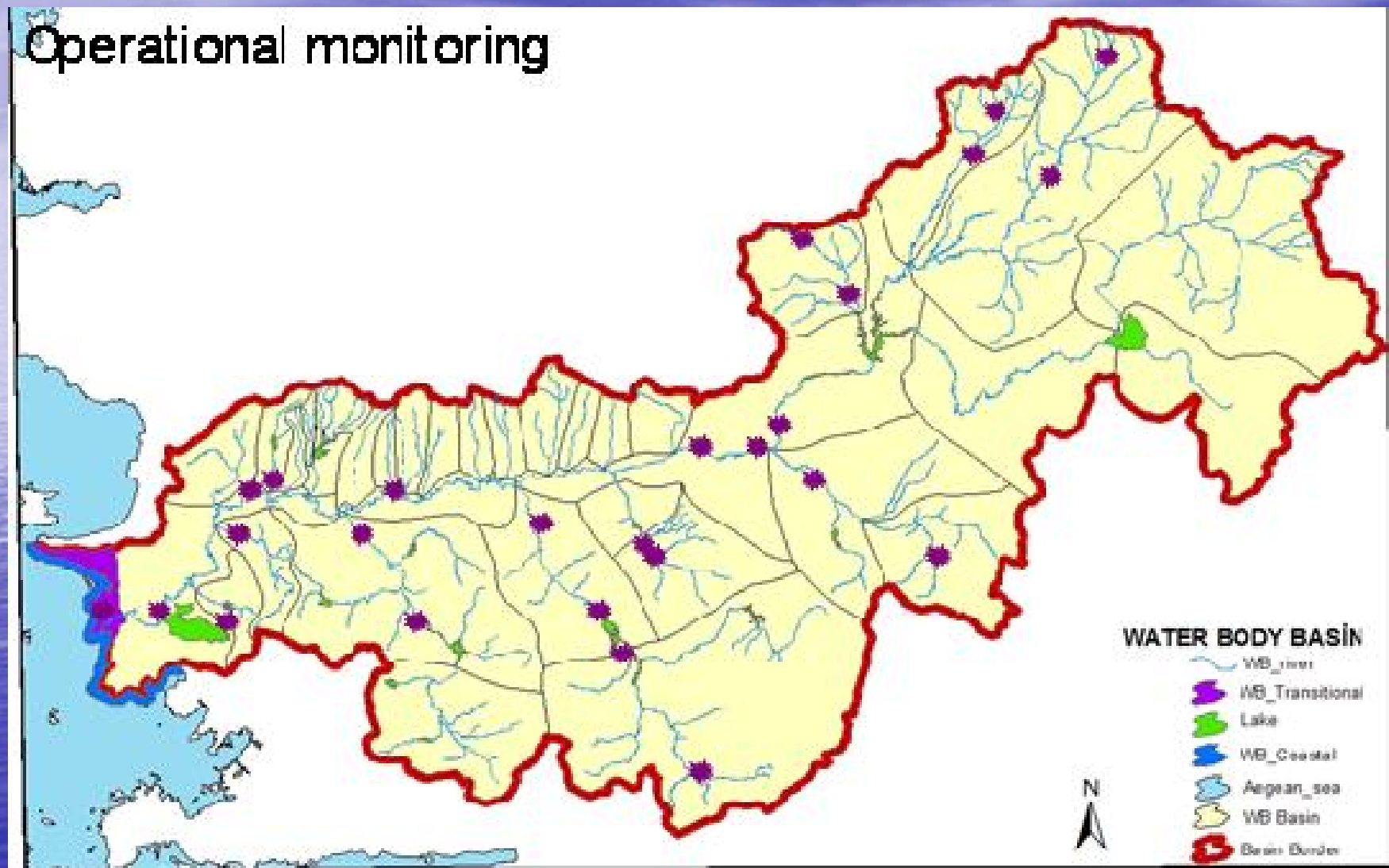
Table of contents

1. Characterization
 2. Pressures and impacts
 3. Protected areas
 4. Monitoring
 5. Environmental objectives
 6. Economic analysis
 7. Program of measures
 8. Register of any more detailed programs
 9. Public consultation
 10. Competent authorities
 11. Contact points for further information
- 

Surveillance monitoring Contaminated



Operational monitoring



The Büyük Menderes in 2015

2015	Ecology	Environmental flow / recharge	Nutrients	Heavy Metals	Pesticides	Sewage
Lakes and reservoirs	moderate	At risk	Possibly at risk	Possibly at risk	Not at risk	Possibly at risk
Groundwater	n/a	Possibly at risk	At risk	At risk	At risk	At risk
Heavily modified rivers	Moderate	Possibly at risk	Possibly at risk	Possibly at risk	Possibly at risk	Possibly at risk
Natural rivers	Moderate	Possibly at risk	Possibly at risk	Possibly at risk	Possibly at risk	Not at risk

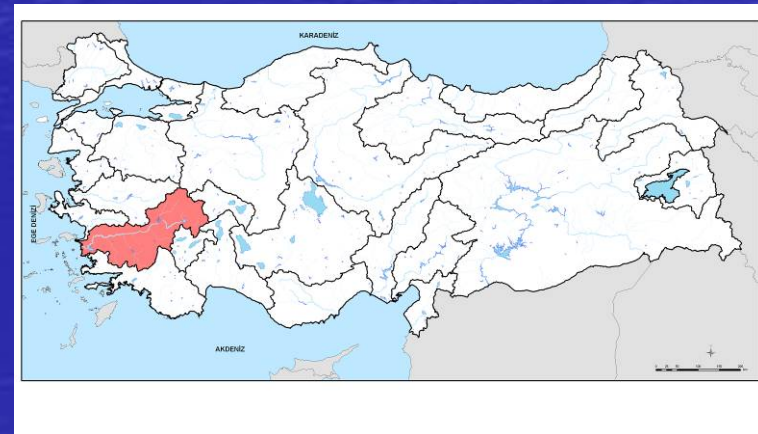
The Büyük Menderes in 2027

2027	Ecology	Environmental flow / recharge	Nutrients	Heavy Metals	Pesticides	Sewage
Lakes/reservoirs	Good	At risk	Not at risk	Possibly at risk	Not at risk	Possibly at risk
Groundwater	n/a	Possibly at risk	Possibly at risk	At risk	Possibly at risk	Possibly at risk
Heavily modified rivers	Good	Possibly at risk	Possibly at risk	Possibly at risk	Possibly at risk	Possibly at risk
Natural rivers	Good	Possibly at risk	Not at risk	Possibly at risk	Not at risk	Not at risk

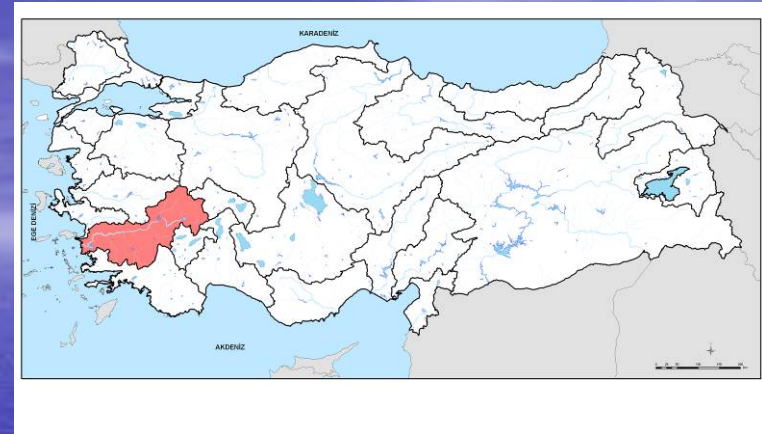
Measures to be taken

Some 66 measures on:

- Point sources (especially discharges by industry and households)
- Diffuse sources
- Hydro morphology



Estimated costs

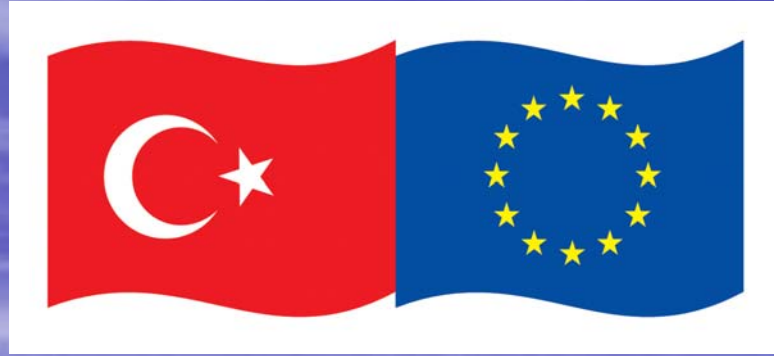


2010 – 2015

TL 750 ongoing policies
TL 250 extra policies

2015 – 2027

TL 1 billion



Thank you